



# Construction Product Guide

Products for the suspension of building services





HEATING, VENTILATION, FAN COIL UNITS, CHILLED BEAMS, DUCTWORK, SOLAR PANELS, CONDUIT, AIR CONDITIONING UNITS, MECHANICAL, PIPING, LADDER TRAY, CABLE BASKET, STRIP LIGHTING, HIGH BAY FLUORESCENTS, TROFFER SUPPORTS, CATENARIES, SHOPFITTING, SIGNAGE, ACOUSTIC BAFFLES, SUSPENDED CEILINGS, BRACING.

# Contents

## About

About Gripple	page 4
---------------	--------

## Applications

Piping	page 8
HVAC	page 10
Electrical	page 12
Lighting	page 14
Modules	page 16
Signage	page 18
Acoustics	page 20
Black Line	page 22
Other Applications	page 24

## Products

Standard Hanger	page 28
Express Hanger	page 29
Angel Hanger	page 30
Stainless Steel Hanger	page 32
Trapeze Hanger	page 34
Trapeze Plus Hanger	page 35
Trapeze Cable Basket Adapter	page 36
Duct Trapeze Hanger	page 37
Butterfly Trapeze Hanger	page 38
Y-Fit & Y-Fit Accessory Hangers	page 40
Cable Strut & C-Clip Hanger	page 42
QT Universal Clamp	page 44
Universal Bracket	page 45
QT Compact Clamp	page 46
Low Profile Bracket	page 47
Universal Clamp	page 48

## End fixings

Loop	page 52
Stud	page 52
Toggle	page 53
Hook	page 53
Mini Hook	page 54

End Stop	page 54
Barrel	page 55
Top Hat Barrel	page 55
Eyelet	page 56
45° Eyelet	page 56
90° Eyelet	page 57
Cladding Hook	page 57
Ring Anchor	page 58
Ceiling Anchor	page 58
Karabiner	page 59
C-Clip	page 59
Shot Fire	page 60
Eyelag	page 60
Twist Clip (white)	page 61
Swivel Toggle	page 61
Metal Deck Insert	page 62
Spider Insert	page 63

## Accessories

Anchoring Solutions	page 66
Beams & Purlins	page 68
Brackets & Attachments	page 69
Adapters	page 72
Trapeze Accessories	page 74
Tools & Finishing Accessories	page 75

## Technical

Technical Services	page 78
Hanging at Angles	page 80
Cable Construction & Cross Sections	page 80
Ductwork Hanger Data	page 81
Pipe Support Spacing Data	page 82
Usage Recommendations	page 83
Quality & Approvals	page 83



# About Gripple

Gripple is an employee-owned company that prides itself on product innovation and a culture of charity and fun. Of the 500-strong Gripple employees working worldwide, over 100 are dedicated to servicing North America. Our Territory Managers here are experts in providing suspension solutions for HVAC, Mechanical, Electrical, Lighting, Acoustics, and Signage. And our manufacturing facility and support teams in Aurora, Illinois enable us to offer flexible, centralized service to the US, Canada, and Mexico.



“...Gripple’s capabilities are recognized, admired, and trusted worldwide.”

## From contractors to consultants, we offer:

- Material Take Offs (MTO's) – we'll advise on what you need and where
- CAD drawings
- Bill of Materials (Gripple product & quantities)
- On-site visits to discuss potential suspension solutions
- Product training – for specific installations or for the latest new products
- Regular on-site advice until job completion
- Fast product delivery





# What we do

## Time Savings

Save up to 85% on installation times for your suspended services when you use Gripple's cable hanger kits, as compared to traditional suspension methods. Not only is the installation faster, no pre-work, such as cutting or filing, is required.

## Health & Safety


Gripple cable hanger kits are ready-to-use straight from the box, removing the need for potentially hazardous cutting on site. One box of Standard No.2 cable hanger kits weighs just 17 lbs, doing the same job as 330 lbs of threaded rod and strut. Not only is the weight and bulk of materials to carry reduced, but also the time spent working at heights.

## CO<sub>2</sub> Savings

For every foot of Gripple cable specified to replace threaded rod, it is estimated that a savings of 2.7 lbs of embodied CO<sub>2</sub> is realized. This equates to a total embodied CO<sub>2</sub> saving of up to 95% when switching from threaded rod to Gripple cable hangers.

## Aesthetics

Gripple cable hanger kits are lightweight and virtually invisible from the ground. Comparing 1/8" cable to 3/8" threaded rod, the difference is easy to see. With a trend towards exposed services, Gripple cable kits enhance the aesthetics significantly, especially in retail environments. We also offer a range of black cable kits ideal for cinemas, theaters and other areas where the ceiling is painted black (See page 22).



"OVER THE COURSE OF A \$10 MILLION JOB, **YOU'RE THROWING AWAY HALF A MILE OF ALL THREAD.** WITH **GRIPPLE**, IF YOU ARE THROWING AWAY ANYTHING IT'S THE TAIL END OF A LITTLE THIN WIRE."

CENTRAL WASHINGTON UNIVERSITY, ELLENSBURG, WA



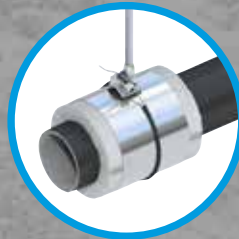


# Applications

Piping	page 8
HVAC	page 10
Electrical	page 12
Lighting	page 14
Modules	page 16
Signage	page 18
Acoustics	page 20
Black Line	page 22
Other Applications	page 24



# Piping



Insulation  
Collars

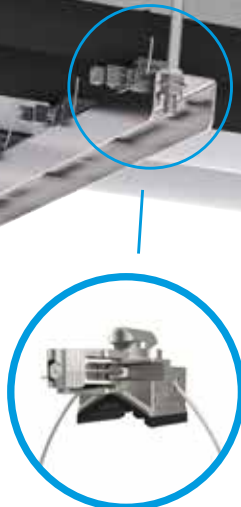
Page 70

Quick Twist  
Compact Clamp

Page 46

Quick Twist  
Universal Clamp

Page 44



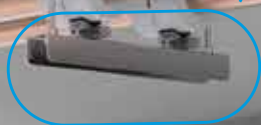
**The Gripple®** range of supports and hangers for piping applications has been developed to provide a fast and versatile solution for suspending all types of pipe and mechanical installations.

**Gripple products** are designed to save time & labor and reduce costs by making the installation quick and easy. Supplied in ready-to-use kits, the products in this range require no on-site cutting and eliminate the need for fabricating pipe bracket assemblies, offering enormous health and safety benefits for your project.



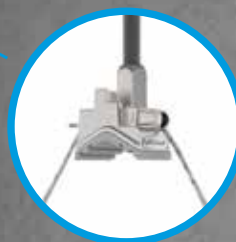
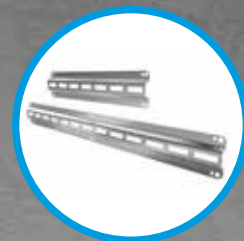
## Universal Bracket

Page 45



## Low Profile Bracket

Page 47

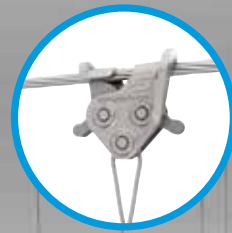


## Universal Clamp

Page 48

Products shown are for internal use only. Images shown for illustrative purposes only.  
Please refer to product installation instructions for full information.

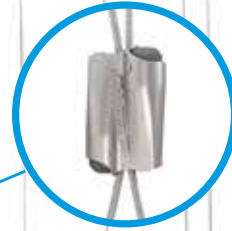
# HVAC



C-Clip  
Page 59



Cable Strut Kit  
Page 42



Express  
Hanger  
Page 29



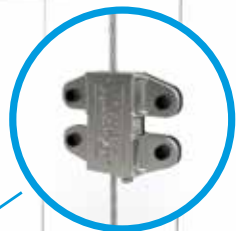
Y-Fit Hanger  
Page 40



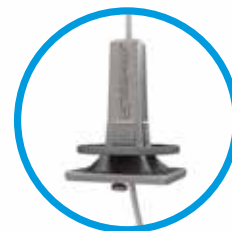
Standard Hanger  
Page 28

Products shown only for internal use. Images shown for illustrative purposes only.  
Please refer to product installation instructions for full information.

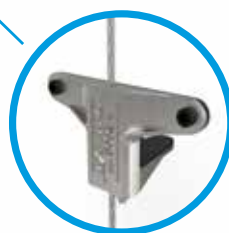




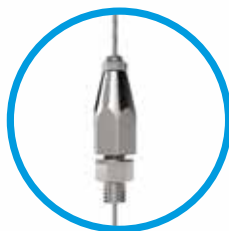
Butterfly Trapeze  
Hanger  
*Page 38*



Trapeze  
Hanger  
*Page 34*



Duct Trapeze  
Hanger  
*Page 37*



Trapeze Plus  
Hanger  
*Page 35*

**The Gripple®** range of hangers for HVAC applications has been developed to provide a fast and versatile solution for suspending ductwork, heaters, air conditioning, radiant panels, and plenum boxes.

Our products are manufactured in the UK and USA, and are designed to save you time and labor costs, thus improving the efficiency of your installation. Unlike traditional suspension methods, Gripple kits do not require cutting or filing. Gripple suspension solutions offer aesthetic design without compromising on strength, and are supplied in ready-to-use kits with a choice of cable length and end fixing.

# Electrical

C-Clip

Page 59

Cable Strut Kit

Page 42

Standard Hanger

Page 28

Cable Basket  
Adapter

Page 36

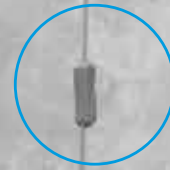
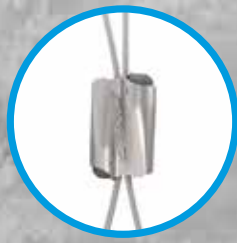
Trapeze Plus  
Hanger

Page 35

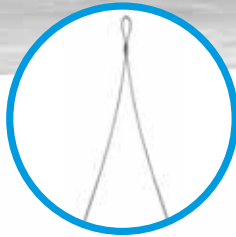
**The Gripple®** range of supports and hangers for electrical applications has been developed to provide a fast and versatile solution for suspending all types of electrical containment.

**Gripple products** are designed to save time & labor and reduce costs by making the installation quicker and easier. Supplied in ready-to-use kits, the products in this range are lightweight, require no on-site cutting, and reduce the time spent working at heights, offering enormous health and safety benefits for your project.

Express  
Hanger  
*Page 29*



Y-Fit  
Hanger  
*Page 40*



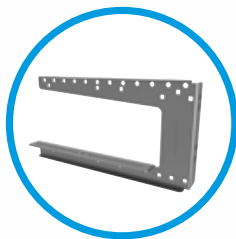
Trapeze  
Hanger  
*Page 34*



QT Universal Clamp  
& Universal Bracket  
*Page 44-45*



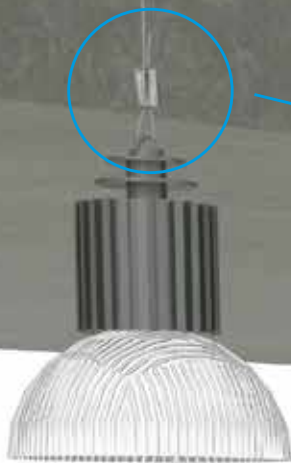
G-Bracket  
*Page 70*



Products shown are for internal use only. Images shown for illustrative purposes only.  
Please refer to product installation instructions for full information.

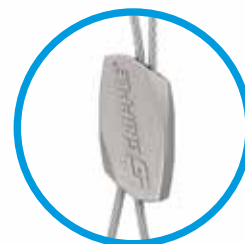


# Lighting



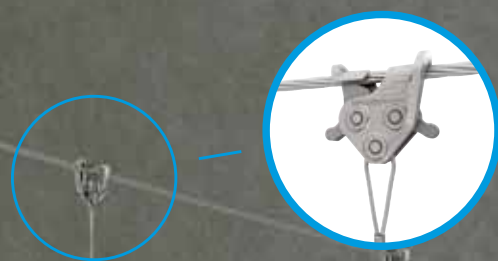
Express  
Hanger  
*Page 29*

Standard Hanger  
*Page 28*



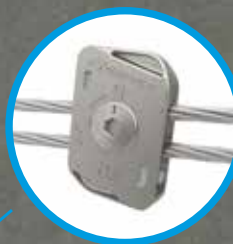
**The Gripple®** range of suspension solutions for lighting are manufactured in the UK and USA, and have been designed to save you time, money, and labor by improving the efficiency of the installation process. Unlike traditional suspension methods, Gripple kits require no on-site cutting or filing, so offer enormous health and safety benefits for your project.

**Our products** offer a sleek, professional and discreet finish, without compromising on strength, and are supplied in ready-to-use kits with your choice of end fixing and cable length.



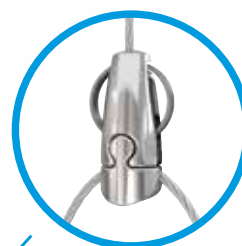
C-Clip

Page 59



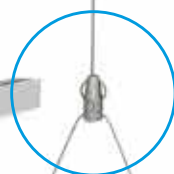
Cable Strut Kit

Page 42



Angel  
Hanger

Page 30



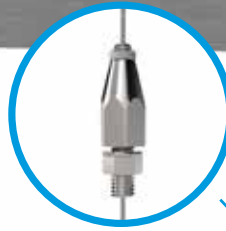
Angel has a wide range of  
feet options available to suit  
your lighting application.

See page 31 for details.



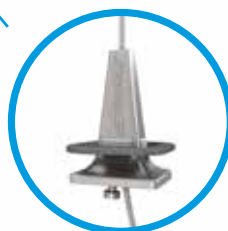
Products shown only for internal use. Images shown for illustrative purposes only.  
Please refer to product installation instructions for full information.

# Modules



Trapeze Plus  
Hanger

*Page 35*

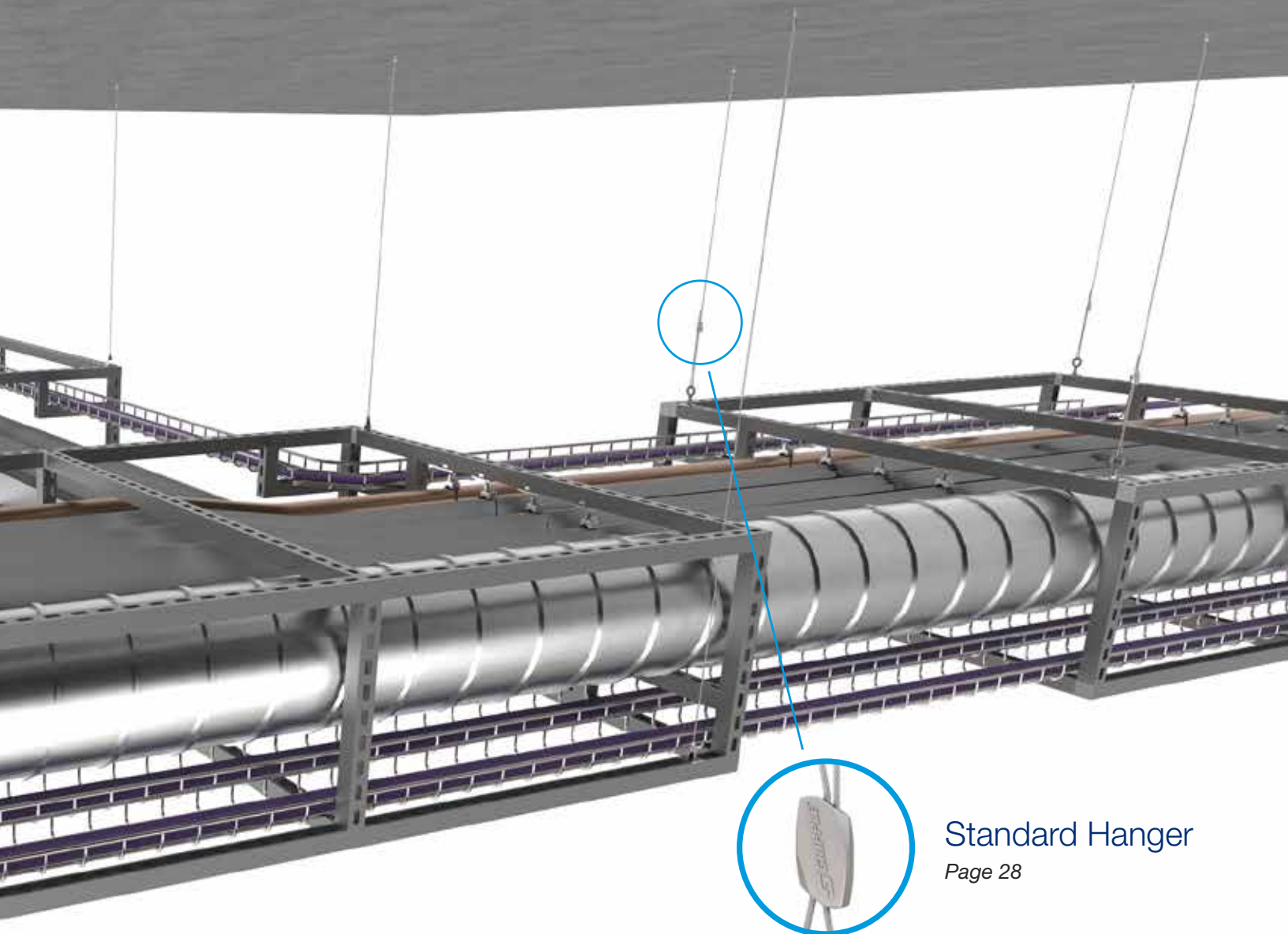


Trapeze  
Hanger

*Page 34*

Products shown only for internal use. Images shown for illustrative purposes only.  
Please refer to product installation instructions for full information.





## Standard Hanger

Page 28

**The Gripple®** range of suspension solutions for module applications has been developed to provide fast and versatile solutions for prefabricated building services modules, even those requiring installation in tight, hard to reach places.

**Our products** are manufactured in the UK and USA, and are designed to save you time and labor costs, thus improving the efficiency of your installation. **As a proven method of installation**, cable hangers can be pre-installed onto modules on the ground, reducing time from module arrival on site to module installation, and with less risk of damage to the module. As a result, installation time is dramatically reduced compared to traditional methods, with no need for cutting, filing, or bending rod into place.

# Signage

## Angel Hanger

Page 30

Angel has a wide range of feet options available to suit your signage application.

See page 31 for details.



**The Gripple®** range of signage hanger products has been developed to provide a complete solution for the suspension of all forms of signage.

The variety of kits allows for complete flexibility and adjustability, without the use of additional tools. The product design provides a sleek, professional finish, without compromising on strength.

**Our kits** have been designed to save you time and labor by making installation quick and easy.

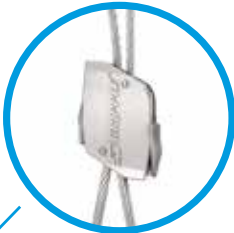
Standard Hanger

Page 28



Express Hanger

Page 29



Angel for Signage

Page 31

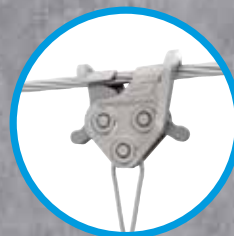


Products shown only for internal use. Images shown for illustrative purposes only.  
Please refer to product installation instructions for full information.

# Acoustics

Cable Strut  
& C-Clip Hanger

Page 42



Angel  
Hanger

Page 30



**The Gripple®** range of hangers for acoustic applications are manufactured in the UK and USA, and have been designed to save you time, money, and labor by improving the efficiency of the installation process. Unlike traditional hanging methods, Gripple kits require no on-site cutting or filing, and offer enormous time-saving benefits for your project.

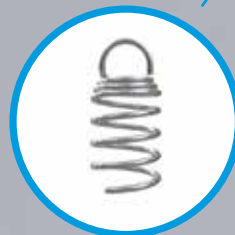
**Gripple products** can fit directly into acoustic baffles, panels, and suspended ceilings, offering a sleek, professional and discreet finish without compromising on strength. All products are supplied in ready-to-use kits with your choice of end fixing and cable length.



Express  
Hanger  
*Page 29*



Acoustic  
Spring  
Anchor  
*Page 72*



Products shown only for internal use. Images shown for illustrative purposes only.  
Please refer to product installation instructions for full information.

# Black Line



**Gripple's ready-to-use suspension kits** now come with the option of a black finish to further enhance the aesthetic appeal of the range.

The slim and unobtrusive aesthetics of Gripple's cable suspension systems have always proved perfectly suited to the design of many modern buildings, either where building services in the ceiling space are left exposed and visible, or for specific applications such as the suspension of lighting.

The new Black line of products aims to build on this success and will be ideal for use in a wide variety of environments where aesthetics and dark ceilings are prevalent, including retail spaces, theaters, exhibition venues, and concert halls.



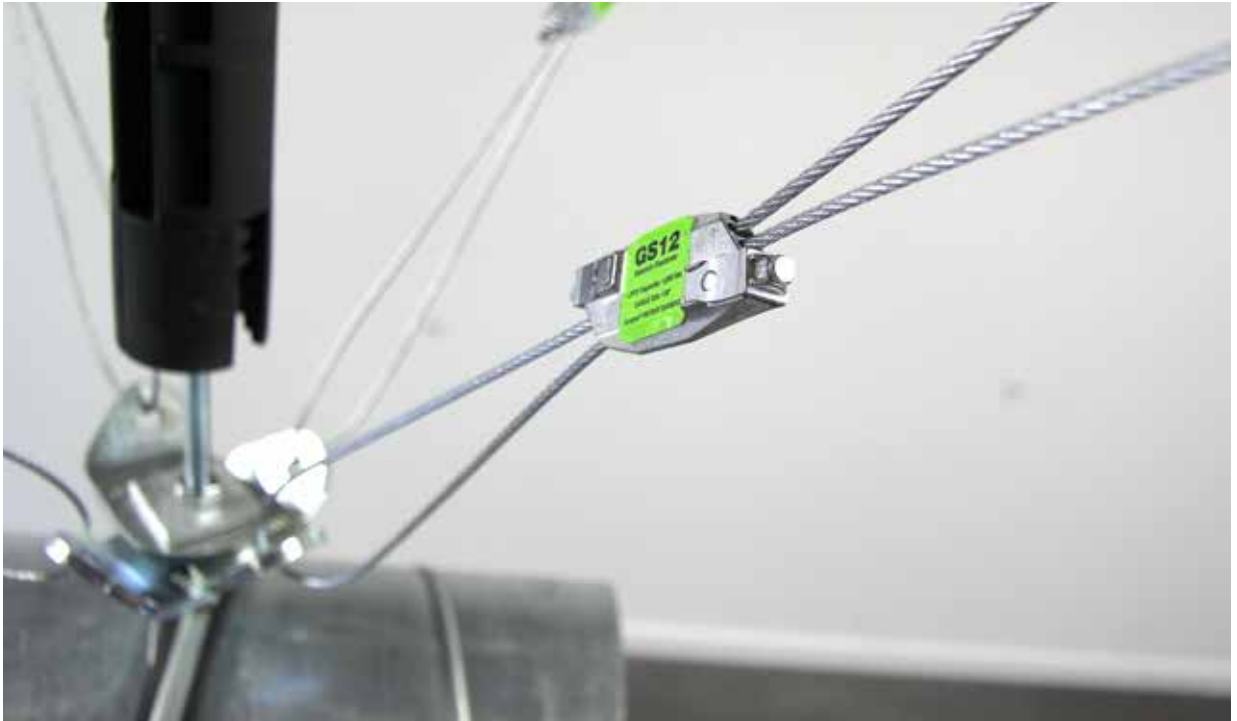
Each ready-to-use kit is supplied with a black cable,  
black fastener, and your choice of black end fixing.

For further information please call 1 866 474 7753 or email [grippleinc@gripple.com](mailto:grippleinc@gripple.com)

Products shown only for internal use. Images shown for illustrative purposes only.  
Please refer to product installation instructions for full information.



# Other Applications



Seismic Bracing & Blast Protection



Rooftop Bracing Solutions



Seasonal Decoration (External Cable Strut)



Solar Panel Installation







## Products

Standard Hanger	page 28
Express Hanger	page 29
Angel Hanger	page 30
Stainless Steel Hanger	page 32
Trapeze Hanger	page 34
Trapeze Plus Hanger	page 35
Trapeze Cable Basket Adapter	page 36
Duct Trapeze Hanger	page 37
Butterfly Trapeze Hanger	page 38
Y-Fit & Y-Fit Accessory Hangers	page 40
Cable Strut & C-Clip Hanger	page 42
QT Universal Clamp	page 44
Universal Bracket	page 45
QT Compact Clamp	page 46
Low Profile Bracket	page 47
Universal Clamp	page 48

# Standard Hanger

Cable hanger kit containing the original Gripple HangFast fastener, for suspending a variety of HVAC, piping, lighting, and electrical services.

- The only Gripple Hanger available in sizes No.1 thru No.5, with Safe Working Loads from 25 thru 715 lbs per hanger
- Ideal for fast suspension of any suspended service
- Up to 6 times faster to install than traditional methods
- Versatile and simple to use
- Strong, safe, and industry approved
- Aesthetically discreet and lightweight
- Fastener can be released with a Release Key to adjust or level the height of the service



Available in sizes No.1 - No.5



Supplied as ready-to-use kits with a length of cable, Standard fastener, and end fixing of your choice.

5:1 SAFETY FACTOR	No.1	No.2	No.3	No.4	No.5
LOAD RATING PER HANGER	25 lbs	100 lbs	200 lbs	495 lbs	715 lbs

END FIXINGS  
PAGE 51

ACCESSORIES  
PAGE 65

TECHNICAL  
PAGE 77

HANGER KIT CODES  
PAGE 33

### Installation

### Release\*

\* When releasing: 1. Remove load, 2. Insert release key into hole, 3. Pull tail wire out

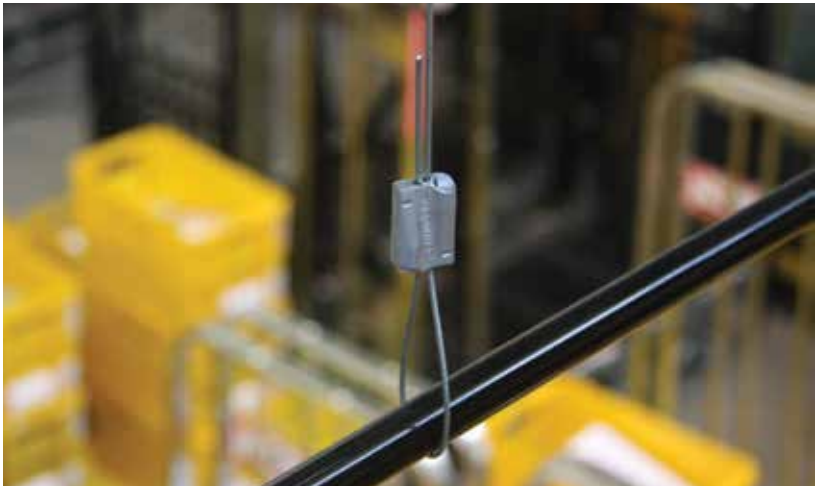
# Express Hanger

For the fast suspension of a variety of services, designed with an easy push-button release mechanism.

- The Express No.1 is ideal for signage, shopfitting, lighting, and other lightweight fixtures
- The Express No.2 is ideal for mechanical and electrical services
- Up to 6 times faster to install than traditional methods
- Discreet and aesthetic design
- Ergonomic push buttons are easy to use
- No release key required to adjust or level the service



Available in sizes No.1 - No.2



Supplied as ready-to-use kits with a length of cable, Express fastener, and end fixing of your choice.

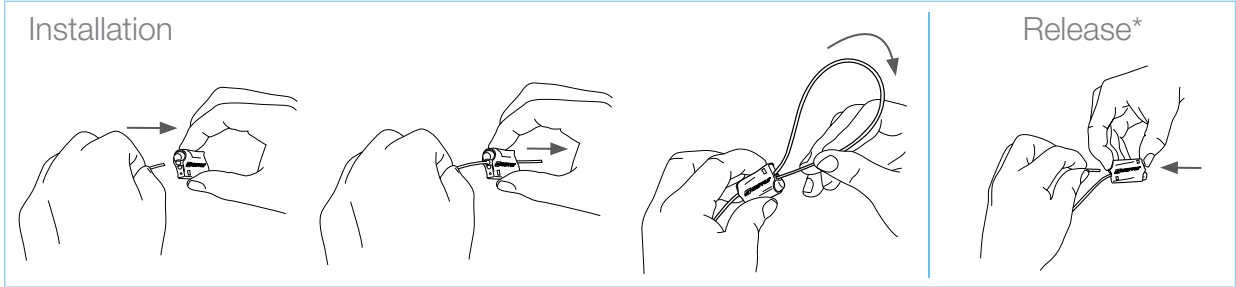
5:1 SAFETY FACTOR	No.1	No.2
LOAD RATING PER HANGER	33 lbs	100 lbs

END FIXINGS  
PAGE 51

ACCESSORIES  
PAGE 65

TECHNICAL  
PAGE 77

HANGER KIT CODES  
PAGE 33



\* When releasing: 1. Remove load, 2. Push release buttons, 3. Pull tail wire out



# Angel Hanger

Designed for architectural lighting suspensions, signage, acoustic baffles, and installations where aesthetics are important.

- Simple one handed operation for easy height/leveling adjustment by pressing in on “wings”
- Contemporary design to complement the overall suspension
- Extensive range of cable end fixing options allowing installation in most structure types
- Variety of feet options to enable attachment in different ways
- Uses 1/16" cable to make the suspension as visually discreet as possible



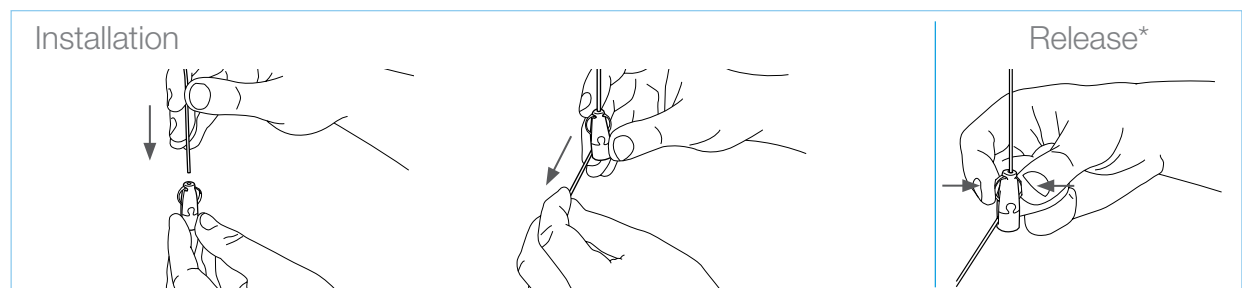
Available with a range of feet options



Supplied as ready-to-use kits with a length of cable, Angel fastener, and end fixing of your choice.

5:1 SAFETY FACTOR	No.1
LOAD RATING PER HANGER	33 lbs

END FIXINGS PAGE 51	ACCESSORIES PAGE 65	TECHNICAL PAGE 77	HANGER KIT CODES PAGE 33
------------------------	------------------------	----------------------	-----------------------------



\* When releasing: 1. Remove load, 2. Squeeze wings, 3. Raise or lower on cable

# Angel Feet Options

The Angel fastener is extremely versatile, with a range of feet options available to suit every application.

## Y-Fit

- Dual fixing points for balance
- Ideal for suspending light fixtures
- 6", 12" and 18" leg lengths as standard
- Various end fixing options for legs



## Signage

- Ideal for signage up to 3/16" in thickness
- Grub screw for direct attachment
- Side cable exit



## Hook

- Ideal for light fittings, signage, or for use with eyebolts, spring, and wire anchors
- Integrated hook with 1/8" clearance
- Safety clasp for security
- Side cable exit



## Swivel

- Swivel feature for suspension at angles up to 90°
- Available in M4, M6, M8 and 1/4" thread
- Female: maximum insertion depth 1/4"
- Male: 9/16" exposed thread length as standard
- Side cable exit



## Side Exit Female

- Female threaded foot, ideal for direct attachment to light fittings, frames and acoustic panels
- Available in M4, M6 and 1/4" thread
- Maximum insertion depth 1/4"
- Side cable exit



## Knockout

- Ideal for strip lighting with standard 7/8" knockout holes
- Slots into knockout centers and twists to lock into place
- No tools needed, or the need to remove the back of the fixture



## Side Exit Male

- Threaded male foot, ideal for direct attachment to light fittings, frames and acoustic panels
- Available in M4, M6 and 1/4" thread as standard. M5, M8, M10 and M13 adapters available
- 9/16" exposed thread length as standard, custom lengths on request
- Side cable exit



Supplied as ready-to-use kits with a length of cable, Angel fastener, and end fixing of your choice.

END FIXINGS - PAGE 51

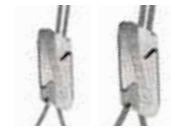
ACCESSORIES - PAGE 65

TECHNICAL - PAGE 77

# Stainless Steel Hanger

Used to suspend a variety of mechanical and electrical services in the food industry and high humidity environments.

- Stainless steel body and springs are corrosion resistant and long-lasting
- Ceramic wedges for extra strength and corrosion resistance
- Aesthetically discreet and lightweight
- Available in two sizes load rated up to 200 lbs SWL
- Available for use with Loop, 1/4" Stud, Hook, Y-Hook, Toggle, and Y-Toggle end fixings
- Fastener can be released with a Release Key to adjust or level the height of the service
- Like all Gripple hangers, not suitable for use in chlorinated or swimming pool environments



Available in sizes No.2 - No.3



Supplied as ready-to-use kits with a length of cable, stainless steel fastener and end fixing of your choice.

5:1 SAFETY FACTOR LOAD RATING	No.2	No.3
	100 lbs	200 lbs

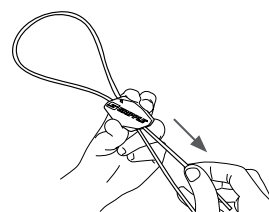
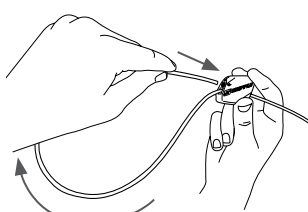
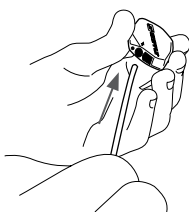
END FIXINGS  
PAGE 51

ACCESSORIES  
PAGE 65

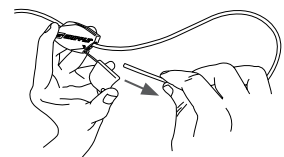
TECHNICAL  
PAGE 77

HANGER KIT CODES  
PAGE 33

## Installation



## Release



\* When releasing: 1. Remove load, 2. Release key into hole, 3. Pull tail wire out.



# Hanger Kit Codes

How to work out your unique product code

1

## CHOOSE YOUR PRODUCT



Standard  
Hanger No.1  
HF1



Standard  
Hanger No.2  
HF2



Standard  
Hanger No.3  
HF3



Standard  
Hanger No.4  
HF4



Standard  
Hanger No.5  
HF5



Express  
No.1  
XP1



Express  
No.2  
XP2



Angel Male  
AL1-SM14



Angel Swivel  
AL1-SF1/4W  
AL1-SM1/4W



Angel Female  
AL1-SF14



Angel Hook  
AL1-ISH



Angel Y-Fit  
AL1-YTG 300\*  
\*Also available  
in 150 and 400  
mm leg lengths.



Angel Signage  
AL1-SL5



Angel  
Knockout  
AL1-KO



Stainless Steel  
Hanger No. 2  
HF2



Stainless Steel  
Hanger No. 3  
HF3

2

## CHOOSE YOUR END FIXING



Loop  
LG



Stainless Steel  
Loop  
LS



Stud  
S\*G



Stainless Steel  
Stud  
SQS



Toggle  
TQG  
TG



Stainless Steel  
Toggle  
TS



Hook  
HG



Stainless Steel  
Hook  
HS



Mini Hook  
MHG



Eyelet  
EYQG



45° Eyelet  
EY453/8G



90° Eyelet  
EY90°G



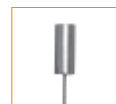
C-Clip 1/8"  
CC-1/8



C-Clip 1/4"  
CC-1/4



Top Hat Barrel  
BB14



Barrel  
B\*G



End Stop  
EG



Cladding Hook  
CHG



Ceiling Anchor  
CWHQ



Swivel Toggle  
STG  
For use with  
Spider and Metal  
Deck Insert only



Spider Cast-in-  
Place Insert  
SBK Standard  
SBKT Threaded  
\* Add the code  
SBK or SBKT after  
cable length, for  
example: HF2-  
STG-5FT-SBK



Metal Deck  
Insert  
MDI-Y  
\* Add the code  
MDI-Y after  
cable length, for  
example: HF2-  
STG-5FT-MDI-Y



Karabiner  
KG



Shot Fire  
SF35



Shot Fire for  
Post Tension  
Concrete  
C945

\* Stud available in 1/4" or 3/8". Barrel available in 1/4" or 3/8". 90 Degree Eyelet available in 1/4" or 3/8".  
In place of asterisk in code, enter Q for 1/4" or 3/8 for 3/8".

3

## CHOOSE YOUR CABLE LENGTH

5FT

10FT

15FT

20FT

30FT

Enter your unique product code (e.g. XP2-LG-10FT):

									-																*
--	--	--	--	--	--	--	--	--	---	--	--	--	--	--	--	--	--	--	--	--	--	--	--	--	---

PRODUCT

END FIXING

CABLE  
LENGTH

For further product information please call **1 866 474 7753** or visit our website **www.gripple.com**

# Trapeze Hanger

Ideal for single and multi-tiered suspension of piping, electrical and HVAC services in conjunction with strut or brackets.

- Can slot into strut or brackets to suspend services with a secure cable hanger instead of threaded rod
- Aesthetic, tapered design; accommodates all slots sizes
- Discreet - fits completely inside the channel
- Pre-fits onto channel with washer to reduce working time in the air
- Available as an accessory for multi-tiered installations
- Ideal for use with Gripple Universal Bracket and QT Universal Clamp for piping installations
- Can be released by pulling pin to adjust or level the height of the service



Available in sizes No.2 & No.3



Supplied as ready-to-use kits with a length of cable, Trapeze fastener, and end fixing of your choice.

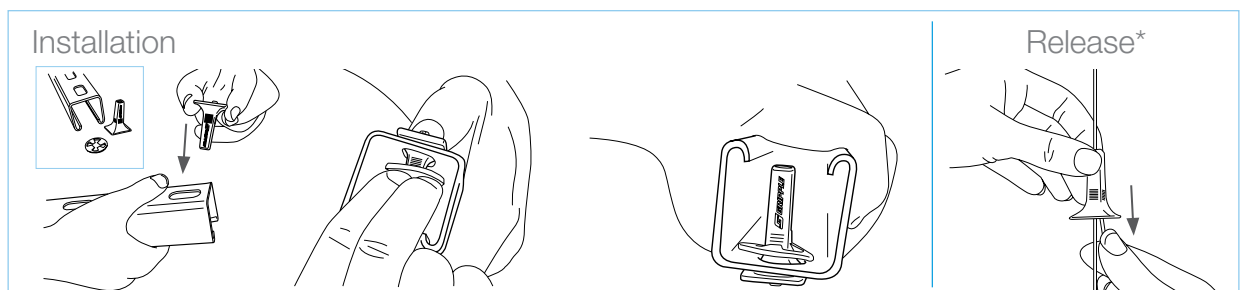
5:1 SAFETY FACTOR LOAD RATING	No.2	No.3
	100 lbs	200 lbs

END FIXINGS  
PAGE 51

ACCESSORIES  
PAGE 65

TECHNICAL  
PAGE 77

TRAPEZE KIT CODES  
PAGE 39



\*When releasing: 1. Remove load, 2. Pull pin, 3. Raise or lower on cable

# Trapeze Plus Hanger

All steel Trapeze Plus is packed with new features to make the suspension of building services even more secure, and the adjustment feature even easier.

- Reduced time working at height; can pre-install onto strut using the washer/nut supplied; strut nut and washer also available as an accessory
- Easy-to-use integral release button for finite adjustment
- Tighten the locking screw to prevent upward movement on cable
- Can be used to suspend multi-tiered strut to optimize space
- Can be used with a clevis hanger to suspend piping



Available in sizes No.2 - No.4



Supplied as ready-to-use kits with a length of cable, Trapeze Plus fastener, and end fixing of your choice.

3:1 SAFETY FACTOR LOAD RATING	No.2	No.3	No.4
	100 lbs	200 lbs	495 lbs

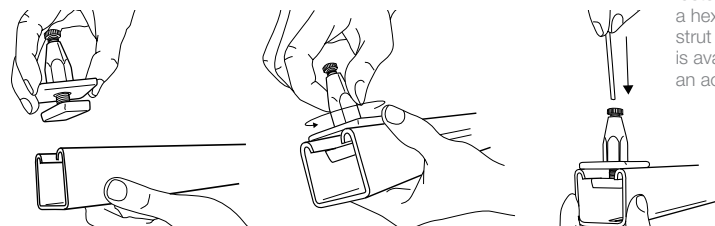
END FIXINGS  
PAGE 51

ACCESSORIES  
PAGE 65

TECHNICAL  
PAGE 77

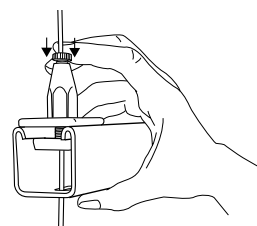
TRAPEZE KIT CODES  
PAGE 39

## Installation



**Note:** The Trapeze Plus fastener is supplied with a hex nut as standard. A strut nut & washer (shown) is available separately as an accessory.

## Release\*



\*When releasing: 1. Remove load, 2. Push button, 3. Raise or lower on cable



# Trapeze Cable Basket Adapter

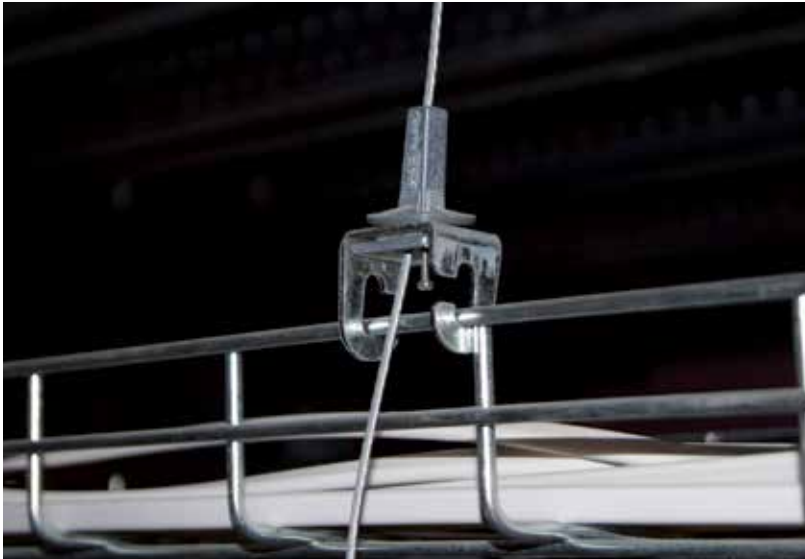
Ideal for single and multi-tiered suspension of cable, baskets.

- Easily twists onto rails of cable basket\*
- Eliminates the need for strut bearers
- Easy-to-use integral release pin on Trapeze allows for height adjustments
- Designed to suspend cable basket up to 130 lbs/ft (based on 5 ft bracket spacing)

\* Per cable basket manufacturer recommendations



Available in size No.2



All hangers are supplied as ready-to-use kits with a length of cable and end fixing of your choice.

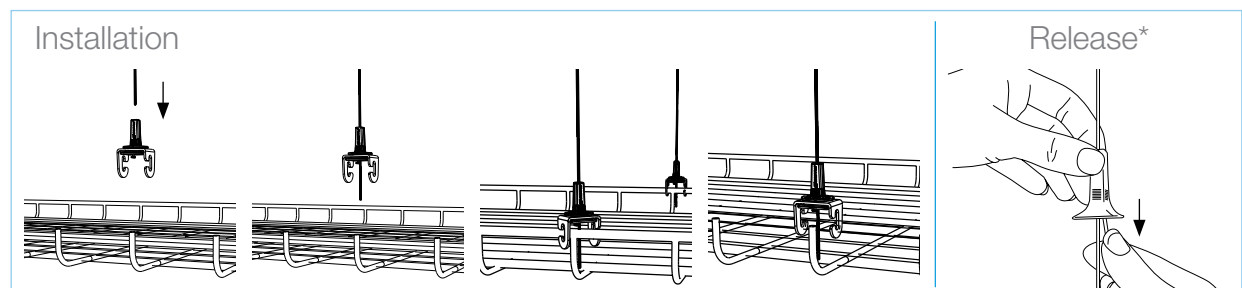
5:1 SAFETY FACTOR LOAD RATING	No.2
	100 lbs

END FIXINGS  
PAGE 51

ACCESSORIES  
PAGE 65

TECHNICAL  
PAGE 77

TRAPEZE KIT CODES  
PAGE 39



\*When releasing: 1. Remove load, 2. Pull pin, 3. Raise or lower on cable

# Duct Trapeze Hanger

Ideal for fast suspension of rectangular ducting or similar services.

- Eliminates the need for a strut support
- Suitable for ducting made from 0.6 - 1.5 mm gauge steel
- Spreads the load across three fixing points
- Attaches with self-drilling screws or pop rivets (not provided)
- Optional rubber pad prevents air leakage and dampens vibration
- Release pin allows rapid height adjustment



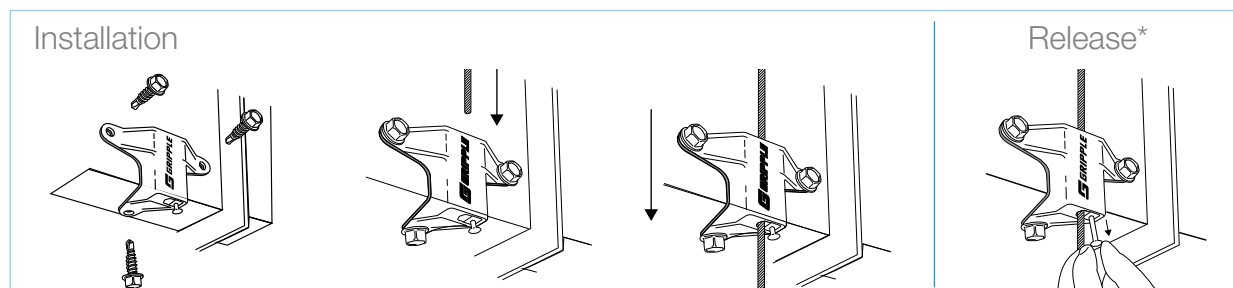
Available in size No.2  
Rubber Pad is Sold Separately



Supplied as ready-to-use kits with a length of cable, Duct Trapeze fastener and end fixing of your choice.

5:1 SAFETY FACTOR LOAD RATING	No.2
	100 lbs

END FIXINGS PAGE 51	ACCESSORIES PAGE 65	TECHNICAL PAGE 77	TRAPEZE KIT CODES PAGE 39
------------------------	------------------------	----------------------	------------------------------



\*When releasing: 1. Remove load, 2. Pull pin, 3. Raise or lower on cable

# Butterfly Trapeze Hanger

Ideal for fast suspension of rectangular ducting or similar services that are hung close to the ceiling.

- Simple height adjustment using the integral pin prior to applying load
- Spreads the load across four fixing points
- Rubber pad prevents air leakage and dampens vibration
- Can be used for multi-tiered installations



Supplied as ready-to-use kits with a length of cable, Butterfly Trapeze fastener, and end fixing of your choice.

5:1 SAFETY FACTOR  
LOAD RATING

No.2

100 lbs

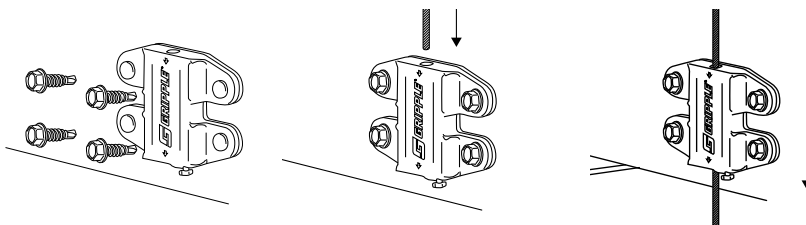
END FIXINGS  
PAGE 51

ACCESSORIES  
PAGE 65

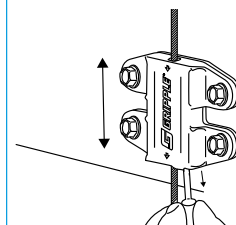
TECHNICAL  
PAGE 77

TRAPEZE KIT CODES  
PAGE 39

## Installation



## Release\*



\*When releasing: 1. Remove load, 2. Pull pin, 3. Raise or lower on cable





# Y-Fit & Y-Fit Accessory

Single point suspension at ceiling with two “leg” attachment points

- Ideal for light fixtures and cable baskets
- One leg can be detached to allow for cable installation
- Available with a range of end fixings for legs (hooks, toggles, etc.) and a variety of leg lengths
- Accessory version available for use with another Gripple hanger; ideal for longer drops
- Use with standard Gripple Fastener or Express Fastener



Accessory version available



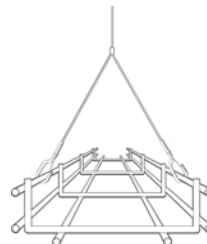
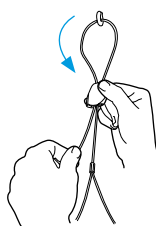
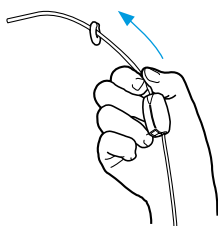
Supplied as ready-to-use kits with a length of cable, Gripple fastener, and end fixings of your choice.

END FIXINGS - PAGE 51

ACCESSORIES - PAGE 65

TECHNICAL - PAGE 77

Installation



Release



# Y-Fit Kit Codes

How to work out your unique product code

1

CHOOSE YOUR PRODUCT



Y-Fit No.1  
YHF1



Y-Fit No.2  
YHF2



Y-Fit No.3  
YHF3



Y-Fit Accessory  
No.1  
AY1



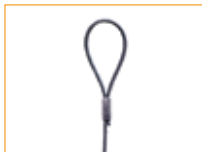
Y-Fit Accessory  
No.2  
AY2



Y-Fit Accessory  
No.3  
AY3

2

CHOOSE YOUR LEG END FIXING



Loop  
LG



Toggle  
TQG  
TG



Hook  
HG

3

CHOOSE YOUR CABLE LENGTH\*

5FT

10FT

15FT

20FT

30FT

\*Not applicable for Y-Fit Accessory

4

CHOOSE YOUR LEG LENGTH\*

150MM

300MM

460MM

\*150MM = 6", 300MM = 12", 460MM = 18". Custom leg lengths are also available.

Enter your unique product code (e.g. YHF3-HG-10FT-300MM):

<input type="text"/>	<input type="text"/>	<input type="text"/>	<input type="text"/>	-	<input type="text"/>	<input type="text"/>	<input type="text"/>	-	<input type="text"/>	<input type="text"/>	<input type="text"/>	<input type="text"/>	<input type="text"/>	<input type="text"/>	<input type="text"/>
PRODUCT				LEG END FIXING			CABLE LENGTH				LEG LENGTH				

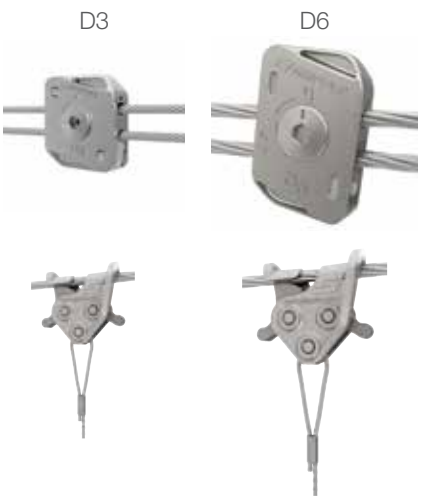
For further product information please call 1 866 474 7753 or visit our website [www.gripple.com](http://www.gripple.com).



# Cable Strut Kit & C-Clip Hanger

Create secure, overhead spans by running high strength cable between two fixed points. Ideal for applications where no direct vertical anchor point is available. The Gripple C-Clip, an innovative twist-on/off device, allows you to suspend from anywhere along the horizontal span.

- Visually discreet and lightweight
- Allows for suspension of services exactly where needed
- No tools needed to install
- Available in 1/8" and 1/4" cable diameters, for suspensions up to 220 lbs per span
- C-Clip End Fixing allows for horizontal and vertical adjustment
- Cams lock solidly in place, even at angles up to 60°



Available in 1/8" and 1/4" systems

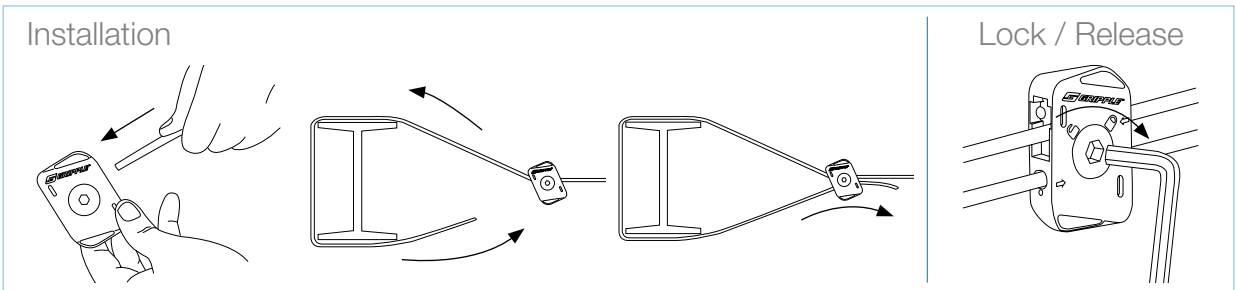


Supplied as ready-to-use kits, including galvanized cable cut to length, two fasteners, and a release key.

5:1 SAFETY FACTOR LOAD RATING CABLE SPAN	1/8"	1/4"
	66 lbs	220 lbs

ACCESSORIES - PAGE 65

TECHNICAL - PAGE 77

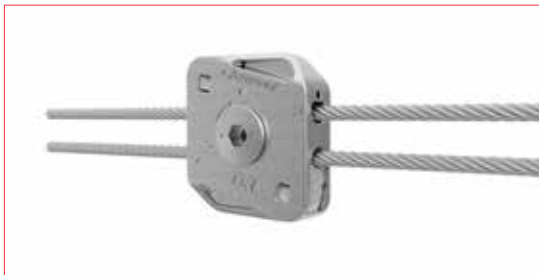


# Cable Strut Kit Codes

How to work out your unique product code

1

CHOOSE YOUR PRODUCT



1/8" Cable Strut  
CTI-1/8



1/4" Cable Strut  
CTI-1/4

2

CHOOSE YOUR CABLE LENGTH

10FT

15FT

20FT

25FT

50FT

75FT

100FT

Enter your unique product code (e.g. CTI-1/8-75FT):

							-					
--	--	--	--	--	--	--	---	--	--	--	--	--

PRODUCT

CABLE LENGTH

C-Clip End Fixing can be ordered to suspend any Gripple hanger from the Cable Strut Kit (see product code pages)



C-Clip 1/8"  
End Fixing Code  
CC-1/8

C-Clip 1/4"  
End Fixing Code  
CC-1/4



CAT-BRACKET-4IN

For further product information please call **1 866 474 7753** or visit our website [www.gripple.com](http://www.gripple.com).

# QT Universal Clamp

The Quick Twist Universal Clamps are used in conjunction with Gripple Pipe Brackets for quick and easy support of all types of piping.

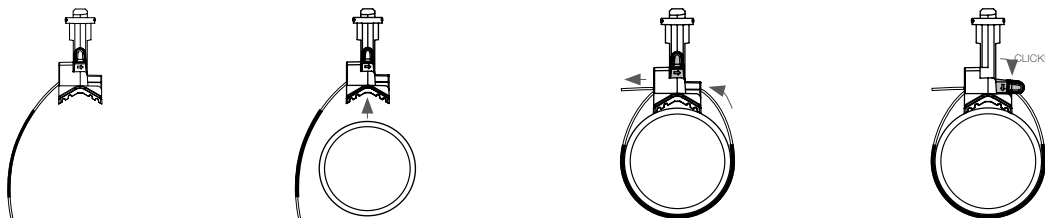
- Replaces 12 different pipe hanger sizes
- Suitable for all pipe sizes from  $\varnothing$  1/2" to  $\varnothing$  6" OD
- Improved insulation against vibration
- Quarter turn fixing to attach to Pipe Bracket - tool free attachment and adjustment
- Retractable, removable sleeve, pre-fitted to cable to prevent galvanic corrosion
- Can be used over Calsil or Armafix insulation (also available)
- Spreader Band accessory available to distribute the weight of the suspended piping more evenly along the cable



Supplied in ready-to-use kits with Universal Bracket sizes 1, 2, 3, or 4 ft.

3:1 SAFETY FACTOR LOAD RATING	QT UNIVERSAL CLAMP	
	170 lbs	
ACCESSORIES PAGE 65	TECHNICAL PAGE 77	PIPING KIT CODES PAGE 49

## Installation





# Universal Bracket

Pipe Brackets are supplied with Quick Twist Universal Clamps for quick and easy support of piping.



Available in sizes  
PB1FT, PB2FT,  
PB3FT, PB4FT

- Quick and easy installation - Universal Brackets are supplied with QT Universal Clamps featuring quarter turn fixing
- Versatile - Can be bolted directly to soffit or wall, or suspended using threaded rod or Gripple Trapeze hangers
- Saves labor time - Eliminates the need for cutting channel on site, allowing more productive use of labor
- Improves health and safety - No tools required for installation
- Can be purchased pre-assembled on request



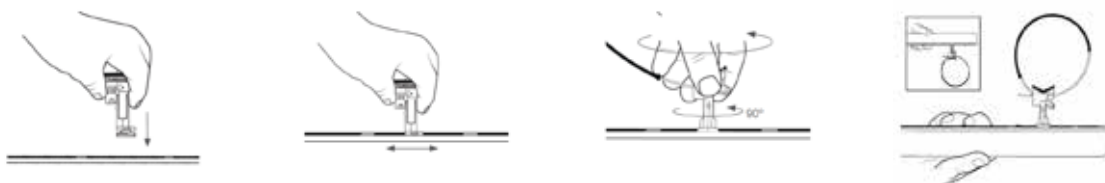
Supplied as ready-to-use kits with QT Universal Clamps.

ACCESSORIES  
PAGE 65

TECHNICAL  
PAGE 77

PIPING KIT CODES  
PAGE 49

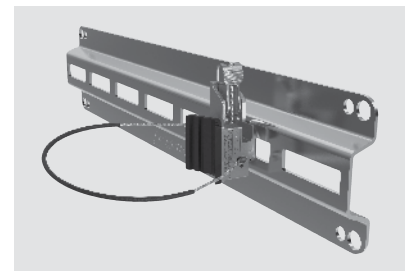
## Installation



# QT Compact Clamp

The Quick Twist Compact Clamps are used in conjunction with Low Profile Brackets for lower profile support of all types of piping.

- A lower profile than the QT Universal Clamp
- Up to 6 times faster than traditional methods
- Suitable for all pipe sizes from  $\varnothing$  1/2" to  $\varnothing$  6" OD
- Replaces 12 different pipe hanger sizes
- Quarter turn fixing to attach to pipe bracket - tool free attachment and adjustment
- Can be used over Calsil or Armafix insulation (also available)
- Improved insulation against vibration
- Spreader Band Accessory available to distribute the weight of the suspended piping more evenly along the cable

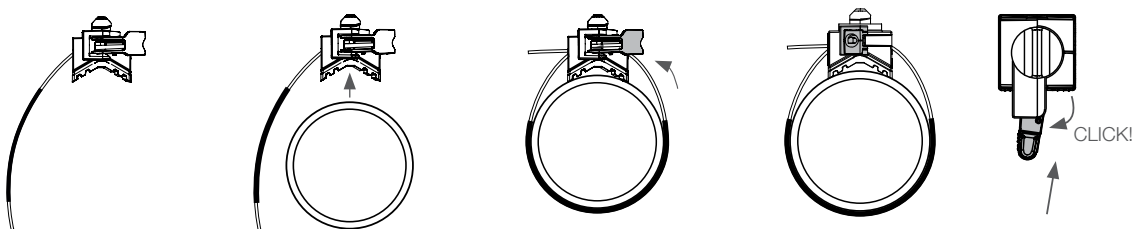


Supplied in ready-to-use kits with Low Profile Bracket sizes 1, 2, 3 or 4 ft.

3:1 SAFETY FACTOR LOAD RATING	QT COMPACT CLAMP	
	170 lbs	

ACCESSORIES PAGE 65	TECHNICAL PAGE 77	PIPING KIT CODES PAGE 49
------------------------	----------------------	-----------------------------

## Installation



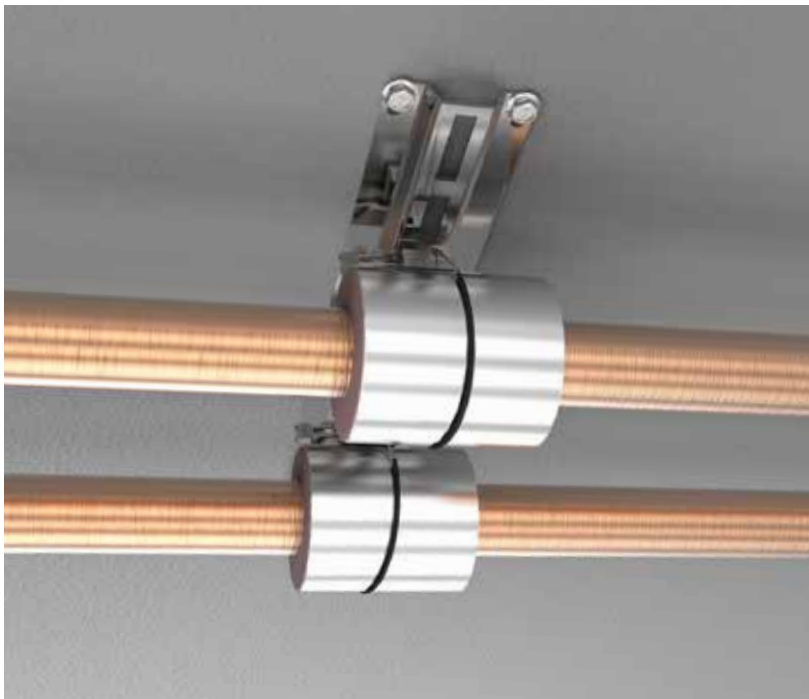
# Low Profile Bracket

Low Profile Brackets are supplied with Quick Twist Compact Clamps for lower profile support of piping.

- A lower profile version than the standard pipe bracket
- Quick and easy installation - Brackets are supplied with QT Compact Clamps featuring quarter turn fixing
- Versatile - Can be bolted directly to soffit or wall
- Saves labor time - Eliminates the need for cutting channel on site, allowing more productive use of labor
- Improves health and safety - No tools required for installation
- Can be purchased pre-assembled on request



Available in sizes  
LPB1FT, LPB2FT, LPB3FT and  
LPB4FT

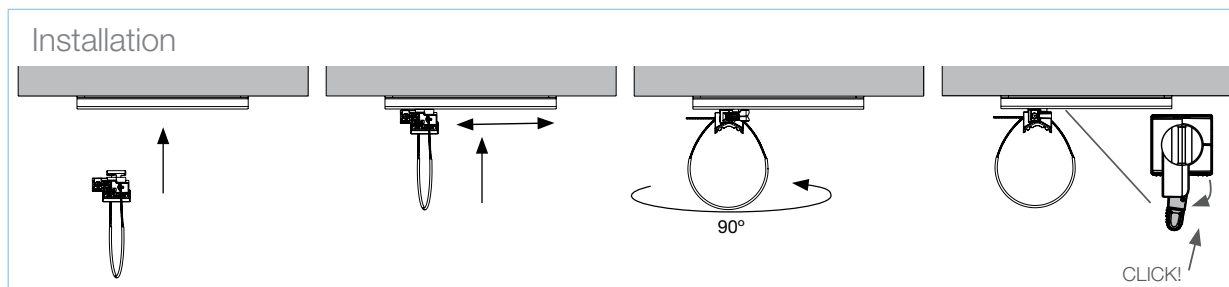


Supplied in ready-to-use kits with QT Compact Clamps.

ACCESSORIES  
PAGE 65

TECHNICAL  
PAGE 77

PIPING KIT CODES  
PAGE 49



# Universal Clamp

The 3/8" threaded Universal Clamp is engineered for hanging all types of piping within mechanical and plumbing services.

- Can be suspended from threaded rod or strut
- Suitable for all pipe sizes from  $\varnothing$  1/2" to  $\varnothing$  6" OD
- Replaces 12 different pipe hanger sizes
- Retractable, removable sleeve is pre-fitted to cable to prevent galvanic corrosion
- Improved insulation against vibration
- Also available as a pre-assembled strut attachment kit; includes a 2-inch length of threaded rod, a hex nut, and square washer
- Can be used over Calsil or Armafix insulation (also available)
- Spreader Band accessory available to distribute the weight of the suspended piping more evenly along the cable



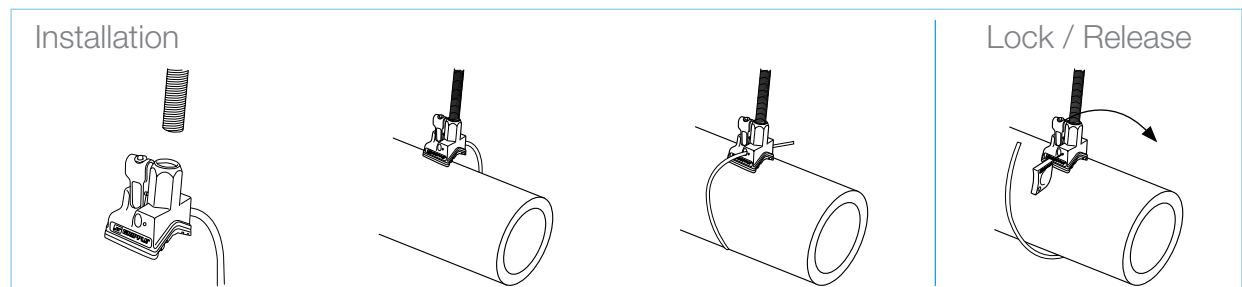
Supplied individually or as part of a custom bracket system to suit your application.

3:1 SAFETY FACTOR LOAD RATING (below mount)	UNIVERSAL CLAMP
6:1 SAFETY FACTOR LOAD RATING (above mount)	170 lbs (below mount) / 1,000 lbs (above mount)

ACCESSORIES  
PAGE 65

TECHNICAL  
PAGE 77

PIPING KIT CODES  
PAGE 49





# Piping Kit Codes

How to work out your unique product code

1

## CHOOSE YOUR PIPE BRACKET



Pipe Bracket  
1ft

PB1



Pipe Bracket  
2ft

PB2



Pipe Bracket  
3ft

PB3



Pipe Bracket  
4ft

PB4



Low Profile Pipe  
Bracket 1ft

LPB1



Low Profile Pipe  
Bracket 2ft

LPB2



Low Profile Pipe  
Bracket 3ft

LPB3



Low Profile Pipe  
Bracket 4ft

LPB4

2

## CHOOSE YOUR CLAMP QUANTITY

2

3

4

5

6

7

8

3

## CHOOSE YOUR TYPE OF CLAMP



QT Universal Clamp

T



QT Compact Clamp

C



Threaded Universal Clamp

3/8

Enter your unique product code (e.g. LPB3-3GC2-C-24IN):

				-		G	C	2	-			-	2	4	I	N
--	--	--	--	---	--	---	---	---	---	--	--	---	---	---	---	---

PIPE BRACKET

CLAMP QUANTITY

TYPE OF  
CLAMP

CABLE LENGTH  
(IN)

For further product information please call **1 866 474 7753** or visit our website [www.gripple.com](http://www.gripple.com).





## End Fixings

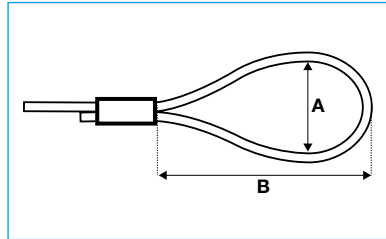
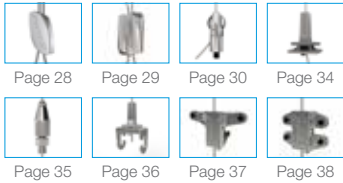
Loop & Stud	page 52
Toggle & Hook	page 53
Mini Hook & End Stop	page 54
Barrel & Top Hat Barrel	page 55
Eyelet & 45° Eyelet	page 56
90° Eyelet & Cladding Hook	page 57
Ring Anchor & Ceiling Anchor	page 58
Karabiner & C-Clip	page 59
Shot Fire & Eyselag	page 60
Twist Clip & Swivel Toggle	page 61
Metal Deck Insert	page 62
Spider Insert	page 63

# Loop

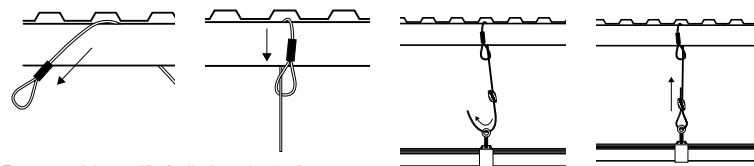
- End Fixing that installs by a non-invasive, simple, choke knot technique
- Can be choked around a beam, bar joist, strut, or roof trusses
- Available up to 715 lbs SWL, with up to a 5:1 safety factor
- Supplied as a ready-to-use kit with Gripple fastener and length of cable
- Available in lengths of 5 ft - 30 ft as standard
- Also available in Stainless Steel



## Available with these Hangers



## Installation



Ensure a minimum 3" of tail wire exits the fastener.

Size	A (in) Approx.	B (in) Approx.
No.1 (0 - 25 lbs)	1 3/16"	2 3/8"
No.2 (25 - 100 lbs)	1 3/16"	2 3/8"
No.3 (100 - 200 lbs)	1 3/16"	2 3/8"
No.4 (200 - 495 lbs)	1 3/4"	3 1/4"
No.5 (495 - 715 lbs)	1 3/4"	3 1/2"

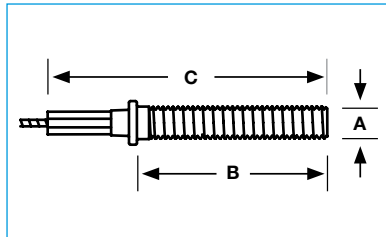
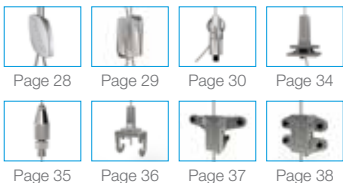
Install fixings in accordance with manufacturer's specifications.

# Stud

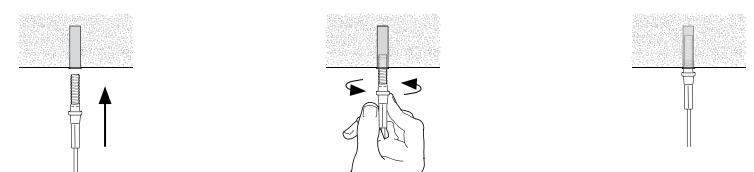
- End fixing that installs into an anchor or internally threaded concrete insert
- Available in 1/4" and 3/8", up to 495 lbs SWL, with up to a 5:1 safety factor
- Supplied as a ready-to-use kit with Gripple fastener and length of cable
- Available in lengths of 5 ft - 30 ft as standard
- Also available in Stainless Steel



## Available with these Hangers



## Installation



Size	A (in)	B (in)	C (in)
No.1 (0 - 25 lbs)	1/4"	1"	2"
No.2 (25 - 100 lbs)	1/4"	1"	2"
	1/4"	2"	4"
No.3 (100 - 200 lbs)	3/8"	1 7/8"	2 3/4"
	1/4"	1"	2"
	1/4"	2"	4"
No.4 (200 - 495 lbs)	3/8"	1 3/4"	3 3/4"
	3/8"	1 3/4"	3 3/4"

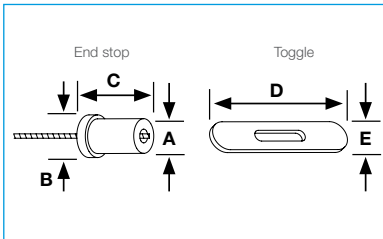
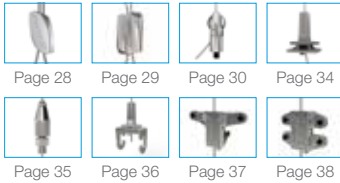
Install fixings in accordance with manufacturer's specifications.



# Toggle

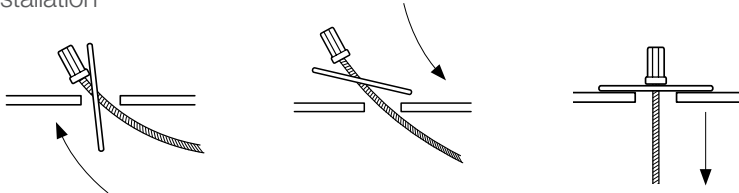
- Inserts into specific hole diameters of light fixtures, metal decking, and other pre-drilled structures or services
- Available to fit 1/4", 5/16", and 3/8" hole sizes, up to 200 lbs SWL, with up to a 5:1 safety factor
- Supplied as a ready-to-use kit with Gripple fastener and length of cable
- Available in lengths of 5 ft - 30 ft as standard
- Also available in Stainless Steel

## Available with these Hangers



Size	A Ø (in)	B Ø (in)	C (in)	D (in)	E (in)
No.1 (0 - 25 lbs)	5/32"	1/4"	5/16"	1 9/16"	7/32"
No.2 (25 - 100 lbs)	1/4"	5/16"	15/32"	1 9/16"	5/16"
	1/4"	1/4"	15/32"	1 9/16"	1/4"
No.3 (100 - 200 lbs)	1/4"	3/8"	3/4"	2"	3/8"

## Installation

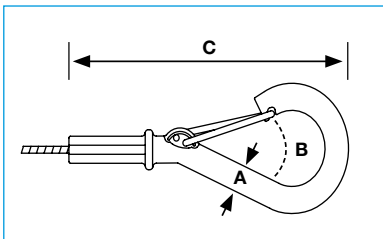
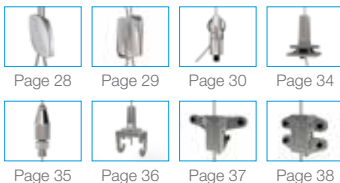


Install fixings in accordance with manufacturer's specifications.

# Hook

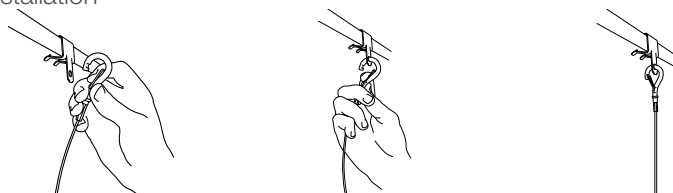
- Quick and easy attachment to cable basket, tray, beam & purlin clips, and light fixtures
- Available up to 200 lbs SWL, with up to a 5:1 safety factor
- Supplied as a ready-to-use kit with Gripple fastener and length of cable
- Available in lengths of 5 ft - 30 ft as standard
- Also available as stainless steel

## Available with these Hangers



Size	A (in)	B (in)	C (in)
No.1 (0 - 25 lbs)	1/4"	5/8"	3"
No.2 (25 - 100 lbs)	1/4"	5/8"	3"
No.3 (100 - 200 lbs)	1/4"	5/8"	3"

## Installation



Install fixings in accordance with manufacturer's specifications.

# Mini Hook

- Smaller version of the hook, ideal for cable basket & light fixtures
- Available up to 33 lbs SWL, with a 5:1 safety factor
- Supplied as a ready-to-use kit with Gripple fastener and length of cable
- Available in lengths of 5 ft - 30 ft as standard

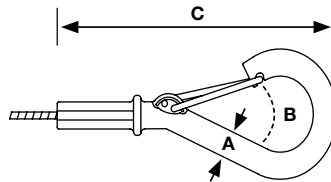
Available with these Hangers



Page 28

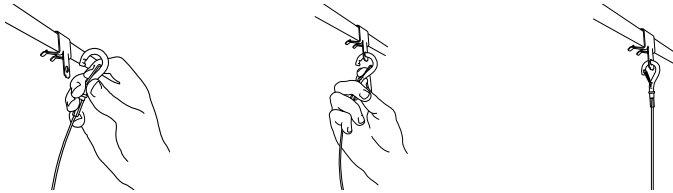
Page 29

Page 30



Size	A (in)	B (in)	C (in)
No.1 (0 - 25 lbs)	3/16"	1/4"	2 3/16"

Installation

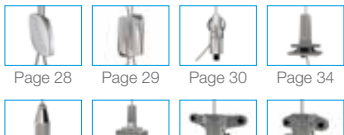


Install fixings in accordance with manufacturer's specifications.

# End Stop

- Simple, slide-in installation for suspending from lighting channels, track, and other channel fixtures
- Available up to 200 lbs SWL, with up to a 5:1 safety factor
- Supplied as a ready-to-use kit with Gripple fastener and length of cable
- Available in lengths of 5 ft - 30 ft as standard
- For use with No.1 - No.3 Gripple hangers

Available with these Hangers



Page 28

Page 29

Page 30

Page 34

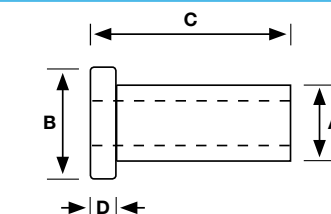


Page 35

Page 36

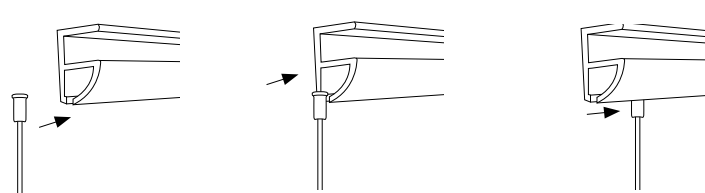
Page 37

Page 38



Size	A (in)	B (in)	C (in)	D (in)
No.1 (0 - 25 lbs)	5/32"	1/4"	5/16"	1/16"
No.2 (25 - 100 lbs)	1/4"	5/16"	15/32"	1/16"
No.3 (100 - 200 lbs)	1/4"	3/8"	3/4"	1/8"

Installation



Install fixings in accordance with manufacturer's specifications.

# Barrel

- Attaches to any 1/4" or 3/8" male thread product
- Ideal for use on signage or exposed services, such as in retail and office environments
- Available up to 200 lbs SWL, with up to a 5:1 safety factor
- Supplied as a ready-to-use kit with Gripple fastener and length of cable
- Available in lengths of 5 ft - 30 ft as standard

## Available with these Hangers



Page 28



Page 29



Page 30



Page 34



Page 35



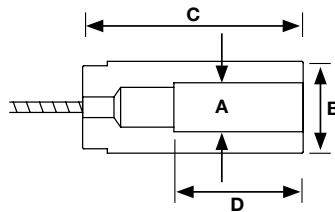
Page 36



Page 37



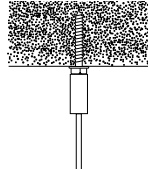
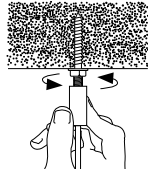
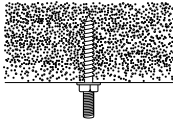
Page 38



Size	A (in)	B (in)	C (in)	D (in)
No.1 (0 - 25 lbs)	1/4"	7/16"	1 3/4"	1"
No.2 (25 - 100 lbs)	1/4"	7/16"	1 3/4"	1"
	3/8"	1/2"	1 3/4"	1"
No.3 (100 - 200 lbs)	3/8"	1/2"	1 3/4"	1"

Install fixings in accordance with manufacturer's specifications.

## Installation



# Top Hat Barrel

- Aesthetic 1/4" threaded end fixing ideal for use when lighting/services are exposed/visible
- Available up to 100 lbs SWL with up to a 5:1 safety factor
- Two-part construction for fast installation using 1/4" sunk screws
- Supplied as a ready-to-use kit with Gripple fastener and length of cable
- Available in lengths of 5 ft - 30 ft as standard

## Available with these Hangers



Page 28



Page 29



Page 30



Page 34



Page 35



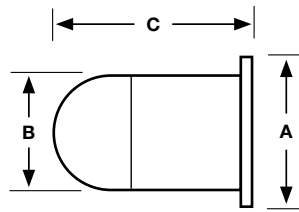
Page 36



Page 37



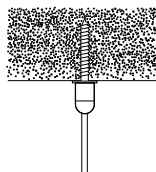
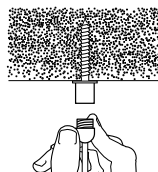
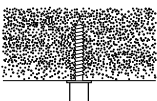
Page 38



Size	A (in)	B (in)	C (in)
No.1 (0 - 25 lbs)	11/16"	9/16"	1"
No.2 (25 - 100 lbs)	11/16"	9/16"	1"

Install fixings in accordance with manufacturer's specifications.

## Installation

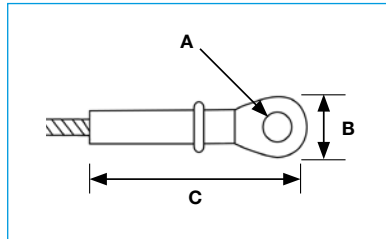
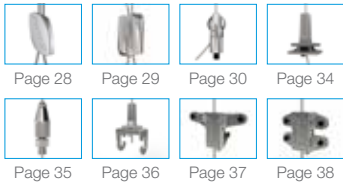


Fix using 1/4" screw.

# Eyelet

- For fixing sideways into wood beams, speakers or visual display, light fixtures, or other applications that require bolting to brackets or fixtures
- Available up to 200 lbs SWL, with up to a 5:1 safety factor
- Supplied as a ready-to-use kit with Gripple fastener and length of cable
- Available in lengths of 5 ft - 30 ft as standard

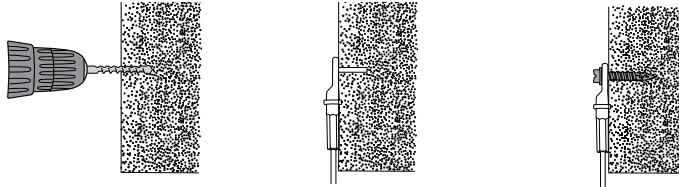
Available with these Hangers



Size	A (in) Anchor size Ø	B (in)	C (in)
No.1 (0 - 25 lbs)	1/4"	3/8"	1 3/4"
No.2 (25 - 100 lbs)	1/4"	3/8"	1 3/4"
No.3 (100 - 200 lbs)	1/4"	3/8"	1 3/4"

Install fixings in accordance with manufacturer's specifications.

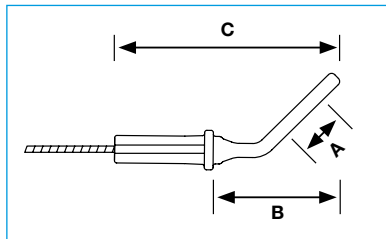
Installation



# 45° Eyelet

- Ideal for use in bracing applications
- Available up to 200 lbs SWL, with up to a 5:1 safety factor
- Supplied as a ready-to-use kit with Gripple fastener and length of cable
- Available in lengths of 5 ft - 30 ft as standard

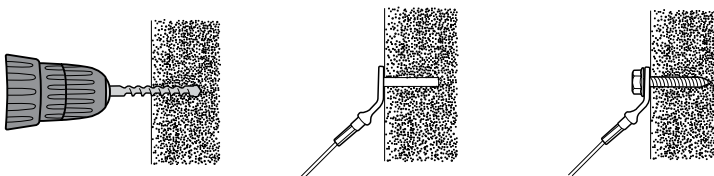
Available with these Hangers



Size	A (in) Anchor size Ø	B (in)	C (in)
No.2 (0 - 100 lbs)	3/8"	1 1/8"	2 1/16"
No.3 (100 - 200 lbs)	3/8"	1 1/8"	2 1/16"

Install fixings in accordance with manufacturer's specifications.

Installation

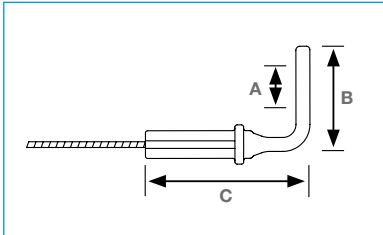




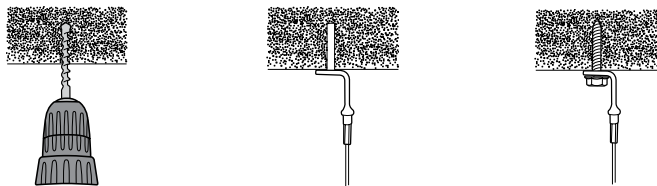
# 90° Eyelet

- Can be shot fired into concrete or steel
- Ideal for use with Gripple concrete screws for direct soffit mounting
- Available up to 200 lbs SWL, with up to a 5:1 safety factor
- Supplied as a ready-to-use kit with Gripple fastener and length of cable

## Available with these Hangers



## Installation



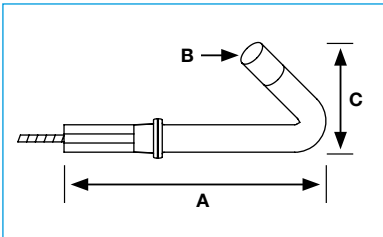
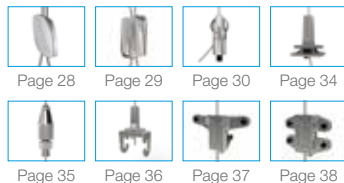
Size	A (in) Anchor size Ø	B (in)	C (in)
No.1 (0 - 25 lbs)	1/4"	1"	1 1/2"
No.2 (25 - 100 lbs)	1/4"	1"	1 1/2"
No.3 (100 - 200 lbs)	1/4" 3/8"	1" 1 3/4"	1 1/2" 1 5/16"

Install fixings in accordance with manufacturer's specifications.

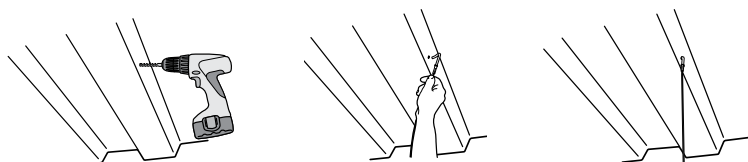
# Cladding Hook

- Designed to fit 1/4" holes in metal decking roof structures
- Suitable for every grade of steel
- Supplied as a ready-to-use kit with Gripple fastener and length of cable
- Safe working load may vary dependent on the thickness of steel to which it is attached
- Available in lengths of 5 ft - 30 ft as standard

## Available with these Hangers



## Installation



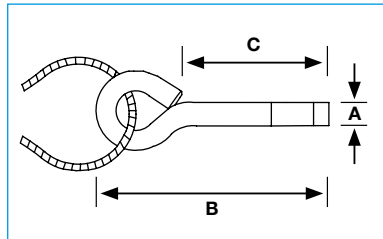
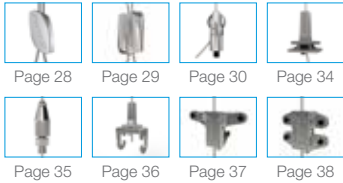
Size	A (in)	B (in) Anchor size Ø	C (in)
No.1 (0 - 25 lbs)	2 3/8"	1/4"	15/16"
No.2 (25 - 100 lbs)	2 3/8"	1/4"	15/16"

Install fixings in accordance with manufacturer's specifications.

# Ring Anchor

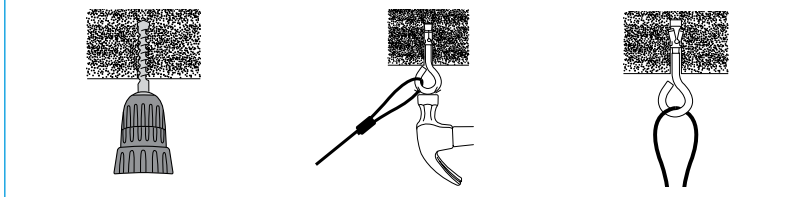
- Ideal for fixing into concrete and cracked concrete
- Shallow anchorage depth of 1"
- Available up to 100 lbs SWL, with a 3:1 safety factor
- Supplied as a ready-to-use kit with Gripple fasteners and length of cable; ideal for use with Loop end fixing
- Available in lengths of 5 ft - 30 ft as standard

## Available with these Hangers



Size	A (in)	B (in)	C (in)
No.1 (0 - 25 lbs)	1/4"	2 1/8"	1 3/8"
No.2 (25 - 100 lbs)	1/4"	2 1/8"	1 3/8"

## Installation

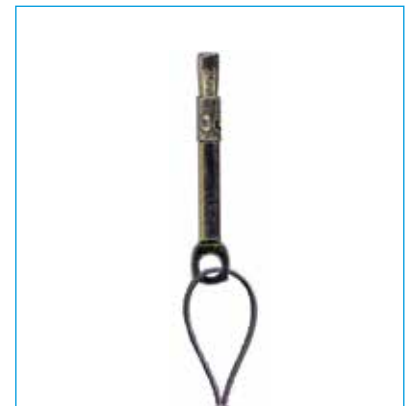
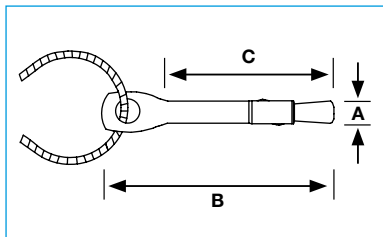
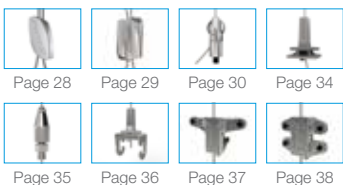


Install fixings in accordance with manufacturer's specifications.

# Ceiling Anchor

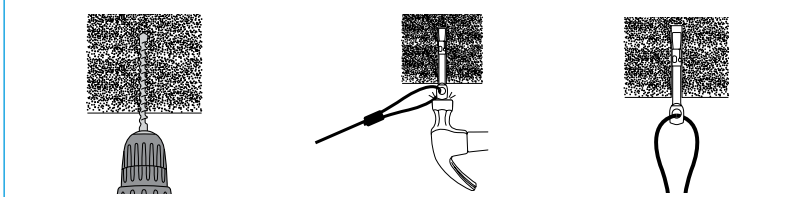
- Ideal for fixing Gripple hangers into concrete
- Knock into a pre-drilled hole, pull with a claw hammer to set
- Available up to 100 lbs SWL, with a 3:1 safety factor
- Supplied as a ready-to-use kit with Gripple fastener and length of cable
- Available in lengths of 5 ft - 30 ft as standard

## Available with these Hangers



Size	A (in)	B (in)	C (in)
No.1 (0 - 25 lbs)	1/4"	2 9/16"	2"
No.2 (25 - 100 lbs)	1/4"	2 9/16"	2"

## Installation



Install fixings in accordance with manufacturer's specifications.

# Karabiner

- Provides 3/8" clearance
- Available up to 200 lbs SWL, with up to a 5:1 safety factor
- Supplied as a ready-to-use kit with Gripple fastener and length of cable; ideal for use with Loop end fixing
- Available in lengths of 5 ft - 30 ft as standard

## Available with these Hangers



Page 28



Page 29



Page 30



Page 34



Page 35



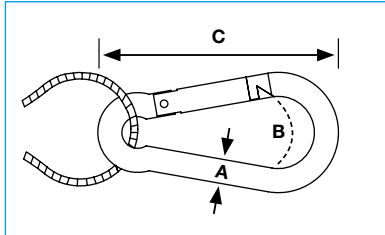
Page 36



Page 37

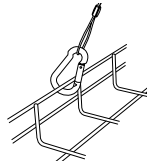
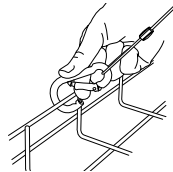
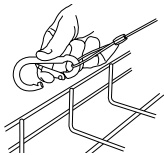


Page 38



Size	A (in)	B (in)	C (in)
No.1 (0 - 25 lbs)	1/4"	3/8"	2 3/8"
No.2 (25 - 100 lbs)	1/4"	3/8"	2 3/8"
No.3 (100 - 200 lbs)	5/16"	3/8"	3 1/8"

## Installation



Install fixings in accordance with manufacturer's specifications.

# C-Clip

- Designed to suspend a Gripple hanger from Gripple Cable Strut
- One handed installation, no tools required
- Allows horizontal and vertical adjustment
- Cams lock solidly in place even at angles up to 60°
- 1/8" and 1/4" versions available
- Available up to 100 lbs SWL with up to a 5:1 safety factor
- Supplied as a ready-to-use kit with length of cable and Gripple fastener

## Available with these Hangers



Page 28



Page 29



Page 30



Page 34



Page 35



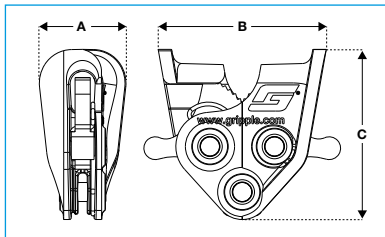
Page 36



Page 37

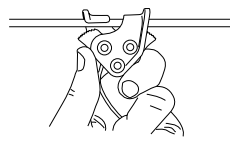
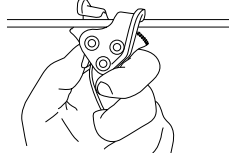


Page 38



Size	A (in)	B (in)	C (in)
1/8" C-Clip	1/2"	1"	1 5/16"
1/4" C-Clip	15/16"	1 3/4"	1 3/4"

## Installation



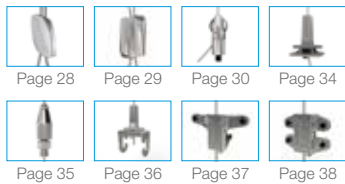
Install fixings in accordance with manufacturer's specifications.

# Shot Fire

- Shot fire into concrete, or concrete over metal deck
- Can be installed with gas and powder-actuated tools
- Quick and easy fastening solution
- Supplied as a ready-to-use kit with Gripple fastener and length of No. 1 or No. 2 cable
- Please reference submittal data for safe working loads
- Available in lengths of 5 ft - 30 ft as standard



## Available with these Hangers



Page 28 Page 29 Page 30 Page 34  
Page 35 Page 36 Page 37 Page 38



SF35

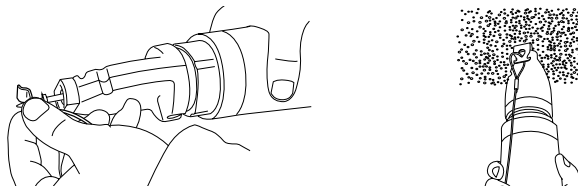


C945



NS90

## Installation



Install fixings in accordance with manufacturer's specifications.

Nail Clip	Shank length (in)	Head diameter (in)
SF35	1 1/4"	5/16"
C945	7/8"	5/16"
NS90	1"	19/64"

# Eyelag

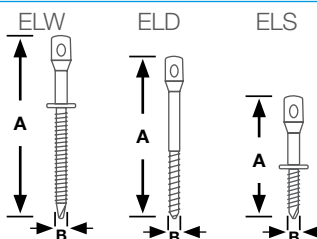
- For suspending ceilings and other acoustic applications
- Attaches to wood and sheet steel
- All screws are made with carbon steel and are zinc plated
- Available in No.1 and No. 2 hanger kits



## Available with these Hangers



Page 28 Page 29 Page 30 Page 34  
Page 35 Page 36 Page 37 Page 38



### ELW

A (in)	B (in)
3"	1/4"

### ELD

A (in)	B (in)
2"	1/4"

### ELS

A (in)	B (in)
2 3/4"	1/4"

## Installation



Install fixings in accordance with manufacturer's specifications.



# Twist Clip (White)

- Designed for use on 1" T-Bar grid ceilings
- Ideal for use with No. 1 End stop hanger
- Quick and easy to install - no tools required
- Rated at 11 lbs. SWL with a 5:1 safety factor
- Will not cause damage to the T-Bar grid
- Available as part of a ready-to-use hanger kit or in bulk as an accessory



Available with these Hangers



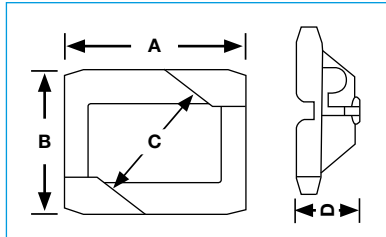
Page 28



Page 29

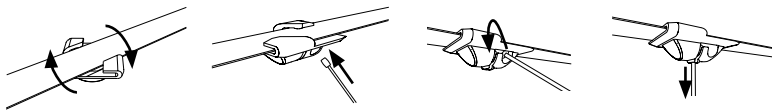


Page 30



A (in)	B (in)	C (in)	D (in)
1 9/16"	1 1/4"	1"	9/16"

Installation



Install fixings in accordance with manufacturer's specifications.

# Swivel Toggle

- Only for use with Gripple Spider and Metal Deck Inserts
- Inserts into Spider or MDI from below
- Supplied as a ready-to-use kit with Gripple fastener and length of No. 2 or No. 3 cable



Available with these Hangers



Page 28



Page 29



Page 30



Page 34



Page 35



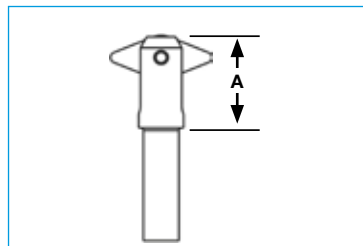
Page 36



Page 37



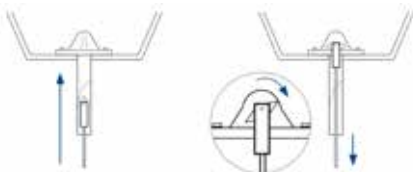
Page 38



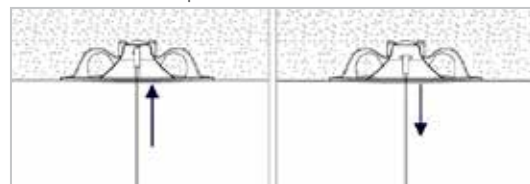
Dimension	Size (in)
A	1 1/2"

Install fixings in accordance with manufacturer's specifications.

Installation for MDI



Installation for Spider







# Metal Deck Insert

- Specifically designed to pre-install into metal deck prior to the concrete being poured
- Rubber head prevents the entry hole from being blocked with concrete
- Tube allows for easy insertion of Swivel Toggle end fixing
- Accommodates either No.2 or No.3 size Gripple Hanger
- Supplied as a ready-to-use kit which includes the Metal Deck Insert, length of cable with Swivel Toggle End Fixing, and Gripple fastener
- Threaded version is also available, for use with a 3/8" threaded rod



Available with these Hangers










Page 28

Page 29

Page 30

Page 34

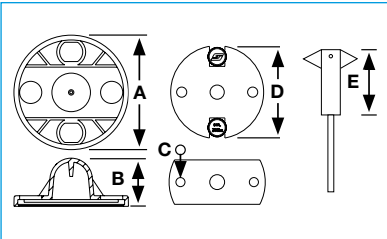





Page 35

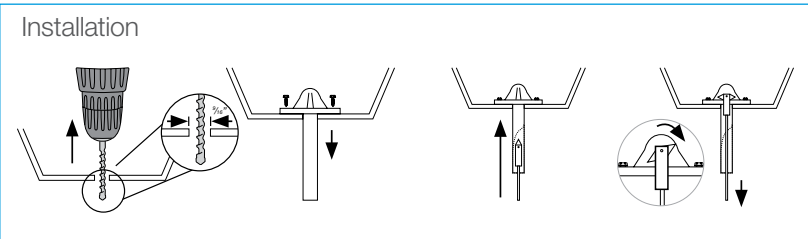
Page 36

Page 37

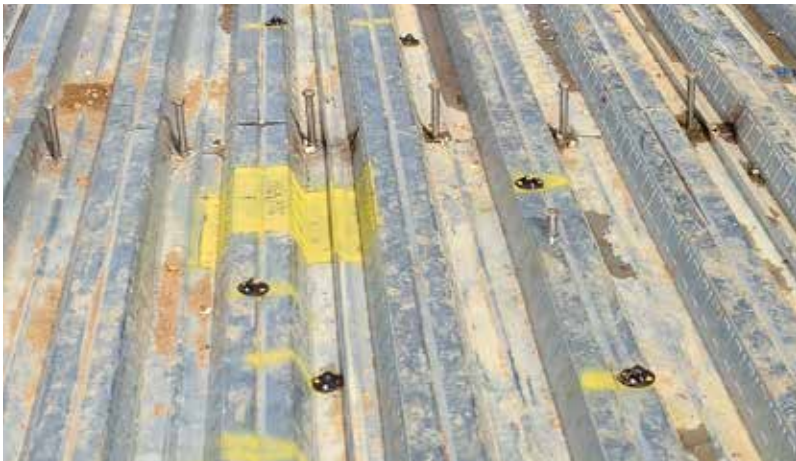
Page 38



Insert Version	A (in)	B (in)	C Ø	D (in)	E (in)
Swivel Toggle Version	2 3/8"	1"	7/32"	2 3/16"	1 1/2"
Threaded Version	2 3/4"	1"	7/32"	2 3/4"	N/A



Install fixings in accordance with manufacturer's specifications.



# Spider Insert

- Specifically designed as a cast-in-place concrete anchoring solution
- Robust construction withstands on-site conditions before, during, and after the concrete pour
- Various color options available, allowing contractors to easily identify their own inserts from below
- Supplied as a ready-to-use kit which includes a Spider Insert, length of cable with Swivel Toggle end fixing, and Gripple fastener
- Threaded version also available, for use with 3/8" Gripple stud hanger or threaded rod



## Available with these Hangers



Page 28



Page 29



Page 30



Page 34



Page 35



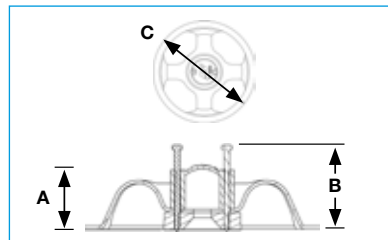
Page 36



Page 37

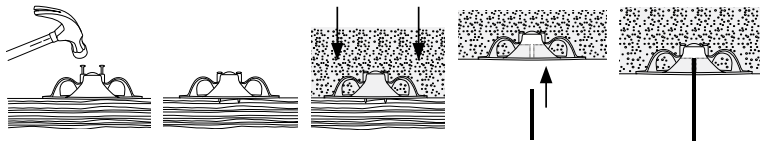


Page 38



A (in)	B (in)	C (in)
1 1/8"	1 5/8"	4 1/2"

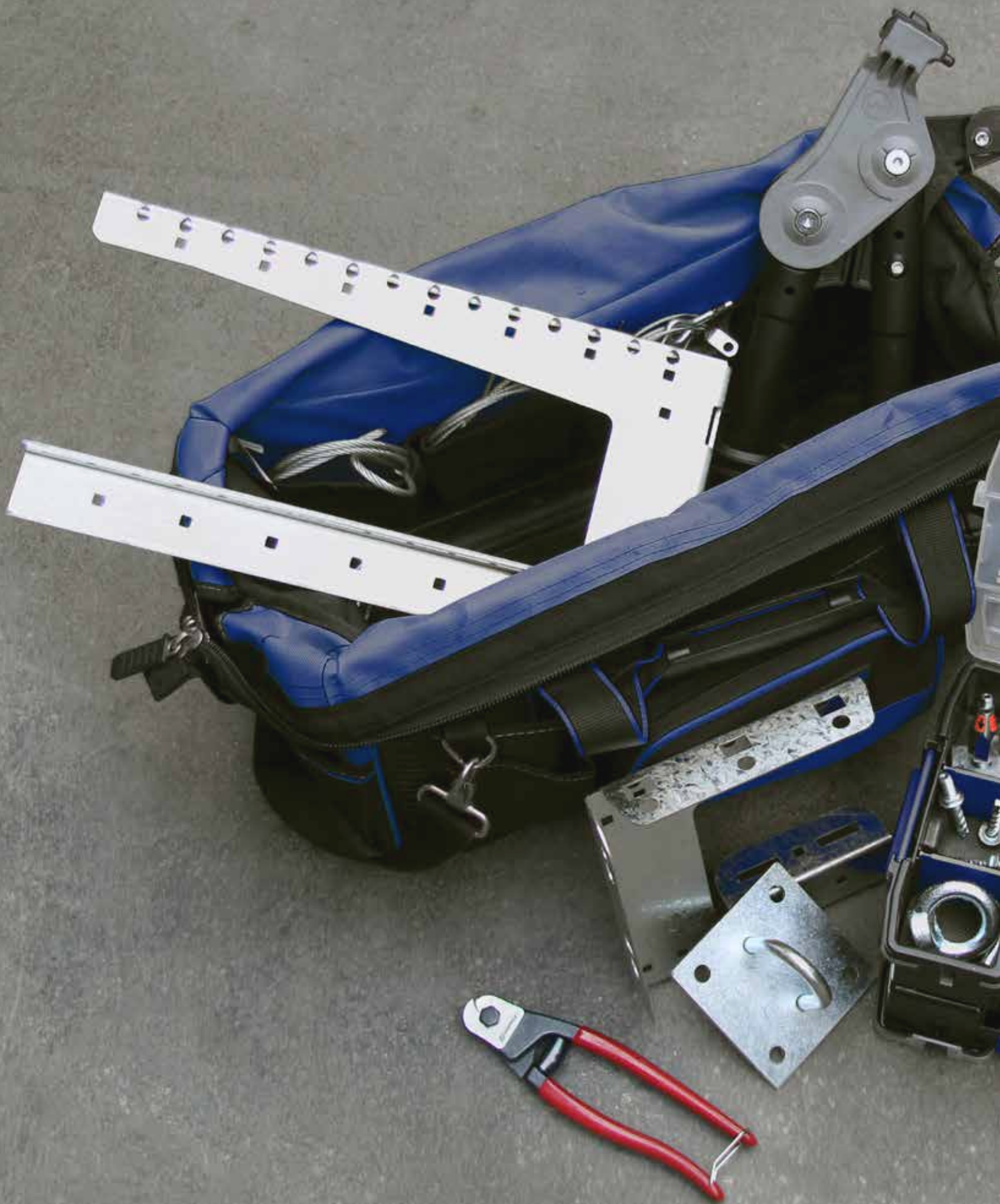
## Installation



Install fixings in accordance with manufacturer's specifications.











## Accessories

Anchoring Solutions	page 66
Beams & Purlins	page 68
Brackets & Attachments	page 69
Adapters	page 72
Trapeze Accessories	page 74
Tools & Finishing Accessories	page 75

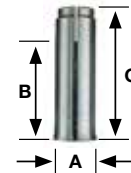
# Anchoring Solutions

## Drop-In Anchor

- Suitable for non-cracked concrete, precast hollow concrete and hard natural stone
- Internal threaded anchor with flared end for easy setting



Page 81

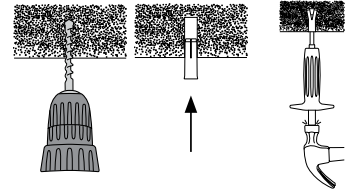


3:1 Safety rating - load rating is dependant on base material

Product code	A	B (in)	C (in)	Max. SWL (lbs)	Hole Ø (in)	Min. Hole depth* (in)	Anchorage depth* (in)
DPA-1/4	1/4"	1/2"	1"	200	3/8"	1 1/4"	1"
DPA-3/8	3/8"	1/2"	1 5/8"	495	1/2"	3/4"	1 5/8"

\* For further information contact Gripple Technical Services

### Installation

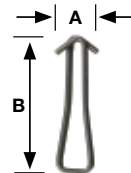


## Concrete Wire Anchor

- Suitable for non-cracked concrete, precast hollow concrete, and hard natural stone
- Stainless steel (304/A2)
- 100lb. SWL applicable to C20/25 concrete



Page 81

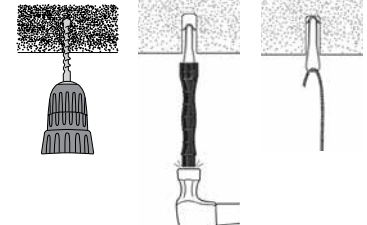


3:1 Safety rating - load rating is dependent on base material

Product code	A (in)	B (in)	Max. SWL (lbs)	Hole Ø (in)	Min. Hole depth* (in)	Min. Anchorage depth* (in)
WIRE-ANCHOR	1/2"	2"	100	5/16"	1 1/4"	1 1/4"

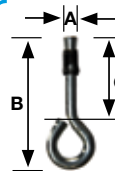
\* For further information contact Gripple Technical Services

### Installation



## Cracked Concrete Ring Anchor

- Suitable for cracked and non cracked concrete
- Self-expanding anchor
- Fire rated

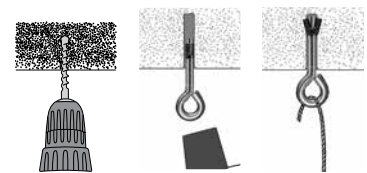


3:1 Safety rating - load rating is dependent on base material

Product code	A (in)	B (in)	C (in)	Max. SWL (lbs)	Hole Ø (in)	Min. Hole depth* (in)	Min. Anchorage depth* (in)
CCRA6	1/4"	2 1/8"	1 3/8"	117	1/4"	3/8"	1"

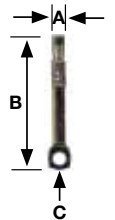
\* For further information contact Gripple Technical Services

### Installation



## Concrete Ceiling Anchor

- Self-expanding eyelet hanger suitable for non-cracked concrete, precast hollow concrete, and hard natural stone
- Knock into a pre-drilled hole and pull with a claw hammer to set
- Ideal for use with the Standard Hanger (page 28)

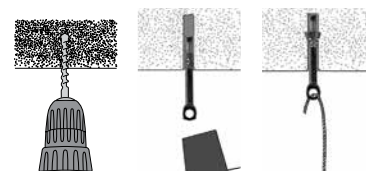


3:1 Safety rating - load rating is dependant on base material

Product code	A (in)	B (in)	C (in)	Max. SWL (lbs)	Min. Hole depth* (in)	Min. Anchorage depth* (in)
CWHQ	1/4"	2 3/16"	1/4"	100	1 3/4"	1"

\* For further information contact Gripple Technical Services

### Installation



# Anchoring Solutions

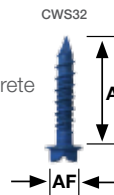
## Concrete/Wood Screw

- Easy-fit slotted/hex head screw suitable for wood and non-cracked concrete
- Ideal for use with the Eyelet and 90° Eyelet End Fixings (page 56-57)
- Removable; excellent corrosion resistance

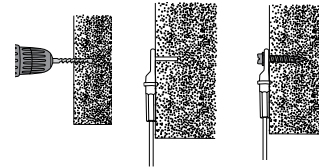
3:1 Safety rating - load rating is dependent on base material

Product code	A (in)	AF (in)	Max. SWL (lbs)	Hole Ø (in)	Min. Hole depth* (in)	Min. Anchorage depth* (in)
CWS32	1 1/4"	5/16"	100	7/32"	1 3/8"	1 1/4"

\* For further information contact Gripple Technical Services



### Installation



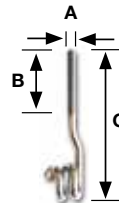
## Pigtail

- Fast and secure anchor suitable for use with the Loop End Fixing (page 58)
- Ideal for use with the Drop-In Anchor (page 66)
- Allows Loop to be removed for maintenance

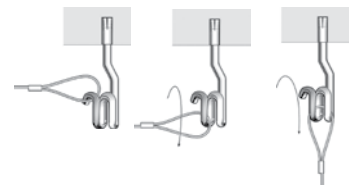
5:1 Safety rating - dependent on base material

Product code	A	B (in)	C (in)	Max. SWL (lbs)
PIGTAIL6-20MM	1/4"	1 3/16"	3"	200
PIGTAIL6-45MM	1/4"	1 3/4"	4"	200

\* For further information contact Gripple Technical Services



### Installation



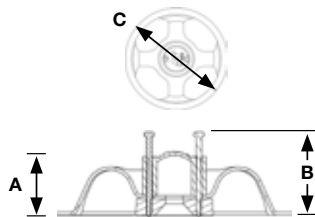
## Spider Insert

- Cast-in-place concrete solution
- Internally threaded version for use with 3/8" threaded rod or Gripple Stud Hanger
- Max. Safe Working Load: 700 lbs

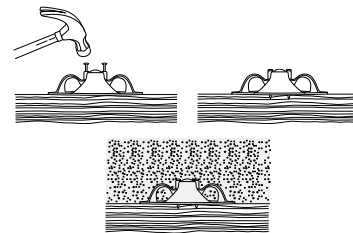
3:1 Safety rating

Product code	A (in)	B (in)	C (in)
SPIDER-3/8TH	1 1/8"	1 5/8"	4 1/2"

\* For further information contact Gripple Technical Services



### Installation

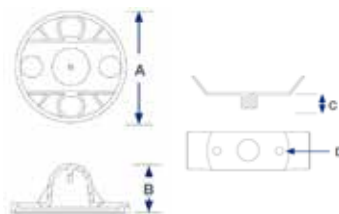


## Metal Deck Insert

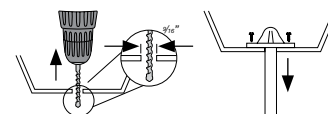
- Pre-insert solution for metal decks
- Internally threaded version for use with 3/8" threaded rod
- Max. Safe Working Load: 700 lbs

3:1 Safety rating

Product code	A (in)	B (in)	C (in)	D (in) Ø
MDI-Y-3/8TH	2 3/4"	1"	11/16"	7/32"



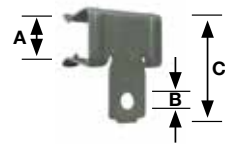
### Installation



# Beams & Purlins

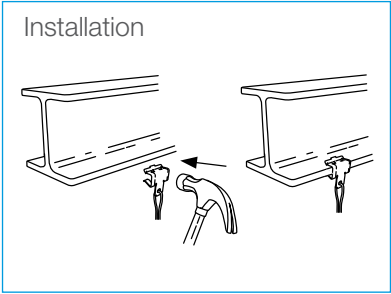
## Beam Clip

- Hammer-on installation
- Accommodates a wide variety of flange thicknesses
- Ideal for use with the Hook End Fixing (page 53)



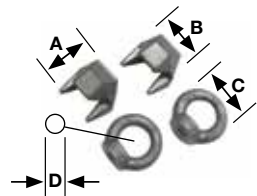
3:1 Safety rating

Product code	A (in) Flange Thickness	B (in) Ø	C (in)	Max. SWL (lbs)
GCB24	1/16" - 1/8"	9/32"	1 3/16"	160
GCB59	1/8" - 1/4"	9/32"	1 1/4"	200
GCB1016	5/16" - 1/2"	9/32"	1 11/16"	200
GCB1720	9/16" - 3/4"	9/32"	1 7/8"	200



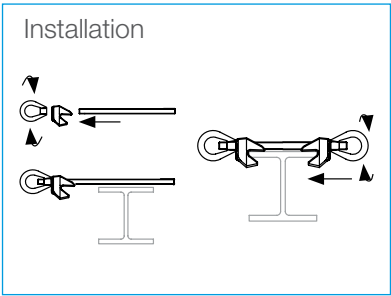
## GF Bracket

- Designed for clamping onto an I-Beam section
- Suitable for 1/4" - 1/2" flange thickness
- Use with 1/2" threaded rod (not supplied)
- Ideal for use with Cable Strut Kits (page 42)



5:1 Safety rating

Product code	Flange Thickness (in)	A (in)	B (in)	C (in)	D (in)	Max. SWL (lbs)
GF12-EYENUT	1/4" - 1/2"	1 3/4"	1 7/8"	2 3/16"	1 3/16"	750
GF16-EYENUT	5/16" - 5/8"	2 1/4"	2 7/16"	2 3/16"	1 3/16"	750
GF20-EYENUT	3/8" - 3/4"	2 61/64"	2 41/64"	2 3/16"	1 3/16"	750

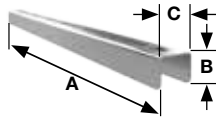




# Brackets & Attachments

## Universal Bracket

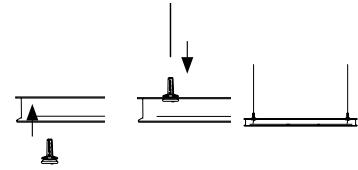
- For use with Gripple QT Universal Clamp and Universal Clamp (pages 44 & 48)
- Can be bolted directly to soffit or wall, or suspended from the soffit using threaded rod or Gripple Trapeze Hangers
- Eliminates the need for cutting channel on site



1.6:1 Safety rating

Product code	A (in)	B (in)	C (in)	Max. Single Point Load (lbs)	Max. Bracket load (above mount)
PB1FT	12"	1 3/8"	1 11/16"	1000	1900
PB2FT	24"	1 3/8"	1 11/16"	500	1400
PB3FT	36"	1 3/8"	1 11/16"	750	1600
PB4FT	48"	1 3/8"	1 11/16"	500	1400

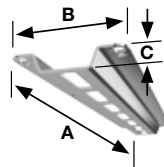
### Installation



Shown hanging w/ Gripple Trapeze hangers

## Low Profile Bracket

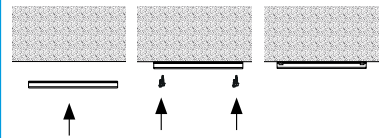
- Can be bolted directly to soffit or wall
- Eliminating the need for cutting channel on site, allowing more productive use of labor
- For use with Gripple QT Compact Clamp (page 46)



3:1 Safety rating

Product code	A (in)	B (in)	C (in)	Max. Single Point Load (lbs)	Max. Bracket load
LPB1FT	14"	3 5/64"	1/2"	170	510
LPB2FT	26"	3 5/64"	1/2"	170	850
LPB3FT	37"	3 5/64"	1/2"	170	1190
LPB4FT	47"	3 5/64"	1/2"	170	1360

### Installation



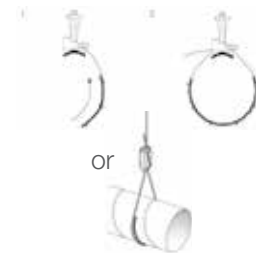
## Spreader Band

- Distributes the weight of the suspended service more evenly along the cable
- Snap to length as required; live hinges allow for flexibility of use
- Easily attaches to cable with integrated clips
- Ideal for use with insulation, fabric duct and bundled cable



Product code	A (in)	B (in)	C (in)
SPREADER-BAND	12"	1 5/8"	3/4"

### Installation



# Brackets & Attachments

## Roundup Plus Saddle

- 180° metal pipe insulation saddle, 22 gauge galvanized steel
- Peel & stick tape secures the saddle to the pipe insulation
- 12" length with various saddle diameters 2" thru 6.5"
- Ideal for use with QT Universal Clamp, QT Compact Clamp, and Universal Clamp (pages 44-48)

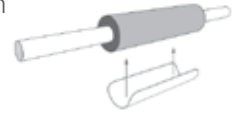


Product code	A (in)	B (in)
PIPE-SADDLE-X*	12"	X*

\* x = length needed: 2, 2.5, 3, 3.5, 4, 4.5, 5, 5.5, 6.5

### Installation

Step 1



Step 2



Step 3



## Pipe Insulation Collars

- For use with all Gripple pipe clamps
- Universal - for mild steel, stainless steel, copper and plastic pipes in a range of sizes
- High performance - reduced heat loss & highly moisture resistant
- Temperature range: Calsil 20°F to +1200°F  
Armafix -297°C to +221°C
- Thermal conductivity: Calsil 0.40 BTU · in/h ft² · °F  
Armafix 0.27 BTU · in/h ft² · °F

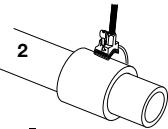


### Installation

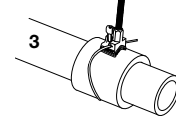
1



2

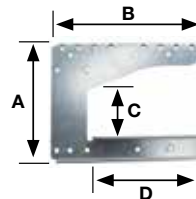


3



## G-Bracket

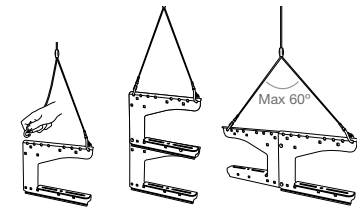
- Purpose made for cable tray and basket
- Brackets can be easily joined together either vertically or horizontally with coupling bolts
- Ideal for use with the Y-Fit and Y-Fit Accessory (page 40)



3:1 Safety rating

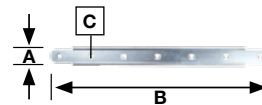
Product code	A (in)	B (in)	C (in)	D (in)	Max. SWL (lbs)
G-BRACKET-100	7 3/4"	6 1/2"	3"	4 3/4"	65
G-BRACKET-200	7 7/8"	10 1/4"	3"	7 7/8"	100
G-BRACKET-300	7 7/8"	14 1/2"	3"	12 5/8"	100

### Installation



## G-Spacer

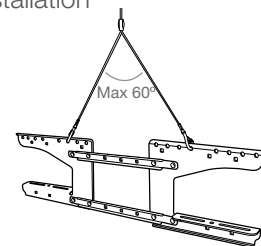
- Joins two G-Brackets together, either vertically or horizontally allowing a central gap (max. 12 in)
- Links different sizes of G-Bracket together
- Adjustable



5:1 Safety rating

Product code	A (in)	B (in)	C (in)
G-SPACER	1 1/32"	13"	1/4" x 1/4"

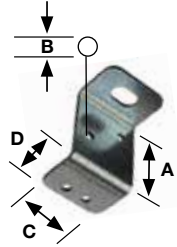
### Installation



# Brackets & Attachments

## Trapeze Bracket

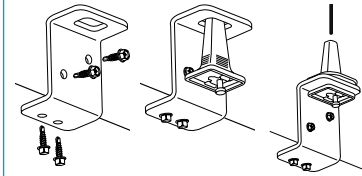
- Easily attached to rectangular ducting with #10 3/4" self-drilling screws
- Replaces the need for threaded rod or duct strap
- Rigid 14 gauge steel thickness with galvanized finish
- Use with No.2 or No. 3 Trapeze Hanger (page 34)



5:1 Safety rating

Product code	A (in)	B (in)	C (in)	D (in)	Max. SWL (lbs)
TPZ-BRACKET	1 7/8"	3/16"	1 1/2"	1"	200

### Installation



## Cable Strut Wall Bracket

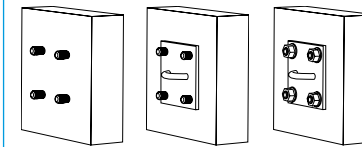
- 4" x 4" back plate for concrete walls and wooden beams
- 4 x 7/16" diameter mounting holes
- 2 1/2" hole spacing
- 3/8" ring for easy cable attachment
- Zinc plated finish (minimum 5 µ)



3:1 Safety rating

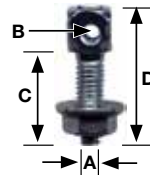
Product code	A (in)	B (in)	C (in)	D (in)	Max. SWL (lbs)
CAT-BRACKET-100-MM	4"	1 3/4"	2 1/2"	7/16"	750

### Installation



## M6 & M8 Adapter

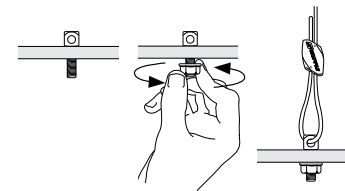
- Ideal for fixing to many services such as light fixtures
- Can be fixed into concrete using a metric Drop-In Anchor (page 74)
- Available in metric threads only



5:1 Safety rating - dependent on material

Product code	A	B (in)	C (in)	D (in)	Max. SWL (lbs)
ADP-M6	M6	1/8"	3/4"	1"	200
ADP-M8	M8	1/4"	1"	1 1/2"	500

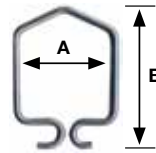
### Installation



# Adapters

## Spring Clip

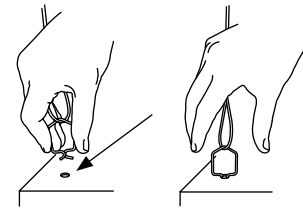
- Used for attaching to top of light fixture with 1/4" hole
- Ideal for use with the Standard Hanger or Express Hanger (page 28-29)



3:1 Safety rating - dependent on material thickness

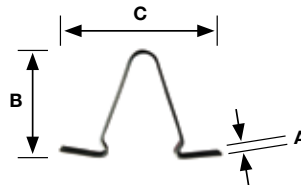
Product code	A (in)	B (in)	Max. SWL (lbs)
CLIP-SPG-68	1"	1 1/2"	66

### Installation



## LSK Clip

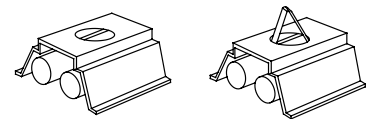
- General purpose clip to support light fittings
- Steel with zinc plated finish
- Designed to fit into 7/8" knockouts on top of light fixtures



3:1 Safety rating

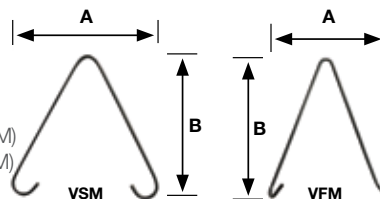
Product code	Hole Ø	A (in)	B (in)	C (in)	Max. SWL (lbs)
CLIP-LSK	7/8"	7/8"	1 3/8"	2"	18

### Installation



## V-Bracket

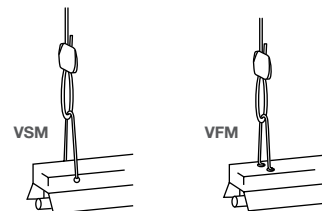
- Fits into mounting holes of light fixtures
- Steel with zinc plated finish
- Side mount bracket for side of light fixture (VSM)
- Front mount bracket for top of light fixture (VFM)



5:1 Safety rating

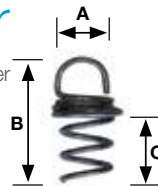
Product code	A (in)	B (in)	Max. SWL (lbs)
BRACKET-VSM	3 1/8"	4 5/8"	30
BRACKET-VFM	2 9/16"	3 7/8"	30

### Installation



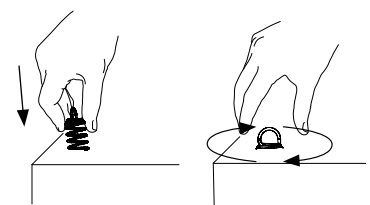
## Acoustic Panel Spring Anchor

- Ideal for use with the Standard Hanger, Angel Hook or Express Hanger
- No tools required for installation
- ASA-S for panels up to 40mm in depth (1 9/16")
- ASA-L for panels up to 70mm in depth (2 3/4")
- Maximum load ratings will vary. Contact Gripple Technical Services for more information



Product Code	A (in)	B (in)	C (in)
ASA-S	5/8"	1 7/8"	1"
ASA-L	1 1/16"	3 7/8"	2 7/8"

### Installation





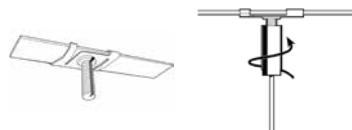
# Adapters

## T-Bar Twist Clip

- Ideal for attaching to suspended ceilings
- Integral 1/4" male thread
- Ideal for use with the 1/4" Barrel End Fixing (page 55)
- Suitable for 1" T-Bar



### Installation

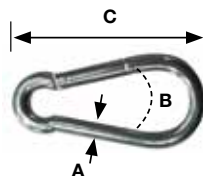


5:1 Safety rating

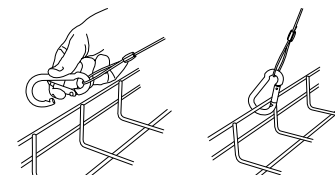
Product code	A	B (in)	C (in)	Max. SWL (lbs)
TBAR-CLIP-Q	1/4"	5/8"	1"	45

## Karabiner

- Versatile fixing, easy to attach and detach
- For use with Loop End Fixing (page 52)
- Available in stainless steel



### Installation



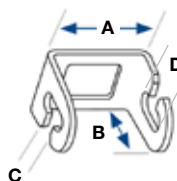
5:1 Safety rating

Product code	A (in)	B (in)	C (in)	Max. SWL (lbs)
KARA-6-60	1/4"	5/16"	2 3/8"	100
KARA-6-60-S	1/4"	5/16"	2 3/8"	100
KARA-8-80	5/16"	1/2"	3 5/32"	200
KARA-8-80-S	5/16"	1/2"	3 5/32"	200

## Cable Basket Adapter

- For use with Trapeze No. 2 (page 34)
- To suspend cable baskets with wire diameter up to 1/4" (6mm)
- Can be used to suspend multi-tier cable basket configurations

\* Per cable basket manufacturer recommendations



### Installation



5:1 Safety rating

Product code	A (in)	B (in)	C (in)	D (in)
CB6	1 3/8"	1 1/4"	1/4"	3/8"

# Trapeze Accessories

## Trapeze No. 2 & 3

Combine Trapeze as an accessory with any Trapeze kit for multi-tiered installations. Load rating of 100 or 200 lbs with a 5:1 safety factor

**Product code:**  
**TZ2-10BB**  
**TRAPEZE-NO3**



## Trapeze Plus No. 2, 3 & 4

Combine Trapeze Plus as an accessory with any Trapeze kit for multi-tiered installations. Load rating of 100 lbs - 495 lbs with a 3:1 safety factor.

**Product code:**  
**MTZ2-10BB-INC**  
**MTZ3-10BB-INC**  
**MTZ4-10BB-INC**



## Butterfly Trapeze

Ideal for use with light ductwork. Combine Butterfly Trapeze as an accessory with any Trapeze kit for multi-tiered installations. Maximum load rating of 100 lbs with a 5:1 safety factor.

**Product code:**  
**BT2-10BB**



## Duct Trapeze

Ideal for use with rectangular ductwork. Combine Duct Trapeze as an accessory with any Trapeze kit for multi-tiered installations. Maximum load rating of 100 lbs with a 5:1 safety factor.

**Product code:**  
**DT2-ACC**

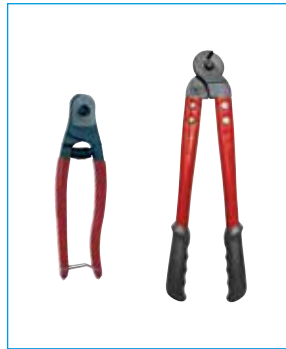


# Tools & Finishing Accessories

## Cable Cutters

- Hardened, durable jaws
- Two sizes available – pocket size for use up to 1/8" diameter cable, or large, providing greater leverage for up to 1/4" diameter cable

**Product code:**  
**CUTTER-GRIPPLE**  
**CUTTER-6MM**



## Release Keys

- Use for adjusting or releasing the Standard fastener (pre-load)
- Two sizes available – for Gripper hangers No.1- No.3 and Gripper hangers No.4, No.5 and Cable Strut kits. For D3 and D6 use No.1 - No.3 adjustment key.

**Product code:**  
**KEY-FLAG**  
(for sizes No.1 to No.3)  
**KEY-HF45-LK**  
(for sizes No.4, No.5 and Cable Strut)



## Drop-In Anchor Setting Punch

- Leaves four permanent indents on the anchor to advise correct installation
- Ergonomic handle with hand protection
- Two sizes available to suit 1/4" & 3/8" anchor

**Product code:**  
**MAN-PUNCH-1/4**  
**MAN-PUNCH-3/8**



## Protective Sleeving

- Protective black tubing to prevent contact between dissimilar metals or for aesthetic enhancement
- Ideal for use on No.2 & No.3 cable

**Product code:**  
**SLEEVE-2MM-FT**  
**SLEEVE-3MM-FT**



## Wire Anchor Installation Tool

- Tool securely fits onto the wire anchor to hammer into place

**Product code:**  
**WIRE-ANCHOR-TOOL**



## Tensioning Tool

- Applies tension easily with the 6:1 gear drive mechanism
- Designed control mechanism to prevent over tensioning
- Compact, easy to handle, operate and carry
- For use with 1/4" Cable Strut kits

**Product code:**  
**TOOL-5-4BX-INC**



## Corner Saddle

- A right angled reinforced molding to prevent cable friction on rectangular ducting
- For use with No. 1-3 cable hanger

**Product code:**  
**CORNER-SADDLE**



## Twister

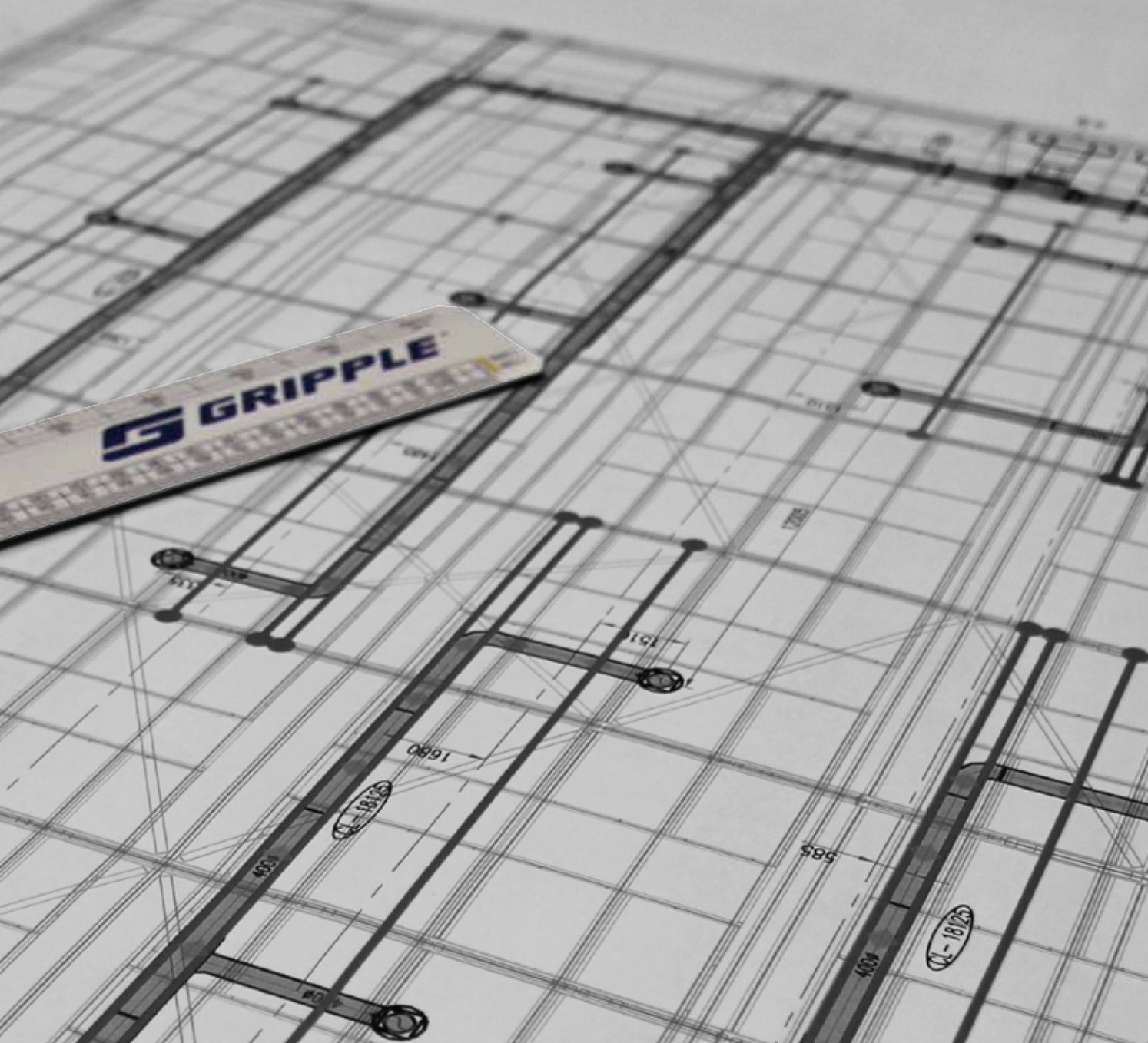
- Keeps tail wires neat and tidy
- Grey aesthetic finish - blends into background
- For use with No.2 and No.3 cable

**Product code:**  
**TWISTER-100BB**










## Technical

Technical Services	page 78
Hanging at Angles	page 80
Cable Construction & Cross Sections	page 80
Ductwork Hanger Data	page 81
Pipe Support Spacing Data	page 82
Usage Recommendations	page 83
Quality & Approvals	page 83

# Overview of Technical Services Department Capabilities

Gripple is a manufacturer of Cable Hanger and Bracing Solutions for all types of suspended services, with our North American headquarters located in Aurora, Illinois, and other locations around the world in the UK, Europe, and India.



Gripple's Technical Services Department is comprised of a dedicated and detail-oriented team of specialists who offer their technical services free of charge to contractors to assist in the bidding process. Simply put, Gripple's Technical Services Department reviews the contractor's drawings and provides the contractor with the recommended Gripple Cable Hanger or Bracing products and quantities for their project.

## HVAC, Mechanical, Electrical, and MTO's (Material Take Offs)

Gripple offers a variety of Cable Hanger products for suspending all types of HVAC, Mechanical, Piping, and Electrical services. No matter the service being suspended, or the type of structure you're suspending from, Gripple has a solution.

By deciding to benefit from our complimentary Take Off services, the following process ensures that with little effort, your full project can be prepared for bidding:

1. Engineer/Contractor submits project drawings to your Gripple Territory Manager
2. Gripple Technical Team marks up the drawings with exact requirements (hanger type, spacings and quantity) for all services\*
3. Gripple Technical Team generates concise Bill of Materials, and a "no obligation" quote is provided
4. Once order is placed, product is packaged and labelled to specific project requirements (e.g. Level Two, Zone One, Ductwork) to ensure ease of identification and use on-site
5. Product is dispatched to the job site, and installed accordingly by contractor

In addition to the above, your local Gripple Territory Manager can also provide supporting product submittal information and site visits upon commencement of the project.

\* We provide our Take Off service for any and all required services on a project basis.





## Cable Strut Take Offs

Gripple Cable Strut Kits create secure, overhead spans by running high strength cables horizontally between two attachment points. A C-Clip then twists and locks onto any point along the cable, offering a suspension point for a Gripple Cable Hanger, and giving complete control of horizontal and vertical positioning of the service being suspended. Installed substantially faster and adjusted considerably easier, Cable Strut systems can be used to hang all types of services in places that would otherwise be impossible.

The Gripple Technical Team can offer assistance and recommendations for installations being suspended on Cable Strut with regard to:

- Locations and length of the Cable Strut runs
- Safe Working Loads of the Cable Strut runs
- Intermediate support points
- Number of C-Clip Hangers that can be accommodated
- Expected sag



## Seismic Bracing for Nonstructural Building Components

Gripple provides Seismic Risk Management. We take the liability issues away from you by providing a complete seismic solution – the risk management you need – that encompasses beginning-to-end Engineering services, as well as a full line of Seismic Bracing and Vibration Management products for use in seismic zones or AT/FP (Anti-Terrorism/Force Protection) situations.

The complex and technical nature of seismic bracing requirements, industry regulations, and life-safety issues necessitates a partner like Gripple. We begin by providing you with the following:

- **Complimentary Budget Estimating** – an all-inclusive estimate you can work into your budget that includes (where applicable) Seismic Cable Bracing, Vibration Management products, and Engineering Services.

Should you move ahead with Gripple on your seismic bracing project, we offer you the following Engineering services for an additional fee:

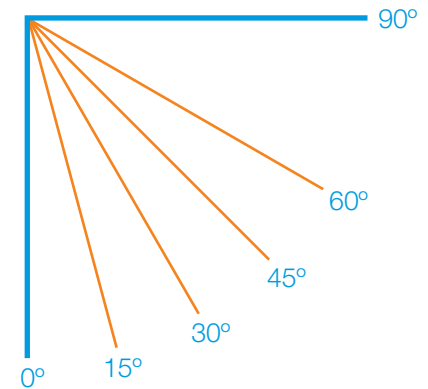
- **PE Stamped Drawings** - noting the proper location of Gripple Seismic Cable Bracing and Vibration Management products, per the scope of the project.
- **BIM Modeling and Clash Detection** - provided as required by design scope. Includes 2D, 3D, AutoCAD, and/or REVIT.
- **Coordination and Site Reviews** - with Structural Engineer and Gripple to ensure proper installation of Gripple products.



# Hanging at Angles

The load rating for a Gripple Hanger is based on the suspension being hung vertically. If the cable is at an angle, an additional sideways force is applied which increases the load on the suspension. The net effect is shown in the table below.

Hanger size	Maximum load (lbs) at an angle from vertical				
	0°	15°	30°	45°	60°
<b>No.1</b>	<b>25</b>	24	21	17	12
<b>No.2</b>	<b>100</b>	96	86	70	50
<b>No.3</b>	<b>200</b>	192	172	140	100
<b>No.4</b>	<b>495</b>	475	425	346	247
<b>No.5</b>	<b>715</b>	686	614	500	357
<b>Load %</b>	<b>100</b>	<b>96</b>	<b>86</b>	<b>70</b>	<b>50</b>



For Gripple hanger, hung at an angle in excess of 60° from vertical, contact Gripple Technical Services.

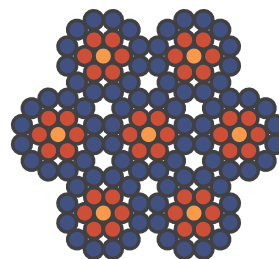
## Cable Construction & Cross Sections

The cable used within our product ranges is galvanized high tensile steel cable, manufactured in accordance with the norm EN 12385.

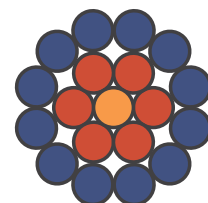
Cable size	Diameter (in)	Construction
No.1	1/16"	7 x 7 or 1 x 19
No.2	5/64"	7 x 7 or 1 x 19
No.3	1/8"	7 x 7 or 1 x 19
No.4	3/16"	7 x 19
No.5	1/4"	7 x 19



7 x 7 (6/1)



7 x 19 (12/6/1)



1 x 19 (12/6/1)



# Ductwork Hanger Data

Rectangular duct (unlined), based on 8' hanging space and two hanger method.

Rect. Duct size (height + width)	Weight / ft.		Weight / 8 ft.	Gripple Hanger Size Needed (2 per 8ft.) *	Safety Factor
	20 Gauge	22 Gauge			
80 x 20"	28.10	--	224.80	3	8:1
70 x 24"	26.44	--	211.52	3	9:1
66 x 24"	25.34	--	202.72	3	9:1
50 x 20"	19.82	--	158.56	2	12:1
40 x 22"	19.27	--	154.16	2	12:1
36 x 18"	--	13.08	104.64	2	9:1
24 x 12"	--	8.86	70.88	2	14:1
16 x 16"	--	7.92	63.36	2	15:1
14 x 10"	--	6.05	48.40	2	20:1
12 x 6"	--	4.64	37.12	2	26:1
10 x 6"	--	4.17	33.36	2	29:1
8 x 6"	--	4.17	33.36	2	29:1

\*No.2 Gripple = 100 lbs SWL per hanger, 5:1 safety factor  
No.3 Gripple = 200 lbs SWL per hanger, 5:1 safety factor

Spiral duct, single wall, based on 10' hanging space.

Diameter	Circumference	Gripple Hanger Size		
		26 Gauge	24 Gauge	22 Gauge
12"	3' 2"	2	2	2
16"	4' 2"	2	2	2
20"	5' 3"	2	2	2
24"	6' 3"	2	2	2
28"	7' 4"	2	2	3
32"	8' 5"	2	3	3
36"	9' 5"	2	3	3
40"	10' 6"	3	3	3
44"	11' 6"	3	3	3
48"	12' 7"	3	3	3
52"	13' 7"	3	3	4
56"	14' 8"	3	3	4
60"	15' 8"	3	4	4

Spiral duct, double wall, based on 10' hanging space.

Inside diameter (in)	Outside gauge	Inside gauge	Wt/Ft (lbs)	Gripple size
12"	26	26	8.0	2
16"	24	24	11.0	3
20"	24	24	13.4	3
24"	24	24	18.0	3
28"	22	24	22.3	4
32"	22	24	25.2	4
36"	20	22	31.2	4
40"	20	22	36.7	4
44"	20	22	40.2	4
48"	20	22	43.8	4
52"	18	20	56.2	5
56"	18	20	60.8	5

Please note, calculations do not take into account weight of connectors.

## Hanger length charts

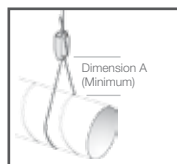
Standard hanging (for spiral duct 36" and smaller)

Duct size (diameter)	Dim. A (minimum)	Gripple cable length needed (ft)							
		Elevation from roof to top of duct							
		5'	8'	10'	12'	15'	18'	20'	
12"	3"	10'	15'	15'	20'	20'	25'	25'	
14"	3.5"	10'	15'	15'	20'	20'	25'	25'	
16"	4"	10'	15'	15'	20'	20'	25'	25'	
18"	4.5"	10'	15'	15'	20'	20'	25'	25'	
20"	5"	15'	15'	20'	20'	25'	25'	30'	
22"	5.5"	15'	15'	20'	20'	25'	25'	30'	
24"	6"	15'	15'	20'	20'	25'	25'	30'	
26"	6.5"	15'	15'	20'	20'	25'	25'	30'	
28"	7"	15'	20'	20'	20'	25'	30'	30'	
30"	7.5"	15'	20'	20'	20'	25'	30'	30'	
32"	8"	15'	20'	20'	25'	25'	30'	30'	
34"	8.5"	15'	20'	20'	25'	25'	30'	30'	
36"	9"	20'	20'	25'	25'	30'	30'	35'	

Cradle hanging (for spiral duct larger than 36").

Duct size (diameter)	Gripple cable length needed (ft)							
	Elevation from roof to top of duct							
	5'	8'	10'	12'	15'	18'	20'	
36"	20'	30'	30'	35'	40'	50'	50'	
38"	20'	30'	30'	35'	40'	50'	50'	
40"	25'	30'	35'	35'	45'	50'	55'	
44"	25'	30'	35'	40'	45'	50'	55'	
46"	25'	30'	35'	40'	45'	50'	55'	
48"	25'	30'	35'	40'	45'	50'	55'	
50"	25'	30'	35'	40'	45'	50'	55'	
52"	25'	30'	35'	40'	45'	50'	55'	
56"	25'	35'	35'	40'	45'	55'	55'	
60"	30'	35'	40'	40'	50'	55'	56'	

- All hangers are available in 5', 10', 15', 20' and 30' standard lengths
- Lengths rounded up to nearest 5 ft increment
- Size of cable hanger (No.1 - No.5) will be based on weight of duct and hanger spacing
- Allow spacing equal to 1/4" of duct diameter between the Gripple fastener and duct (Dim. A)



- All hangers are available in 5', 10', 15', 20' and 30' standard lengths
- Lengths rounded up to nearest 5 ft increment
- Size of cable hanger (No.1 - No.5) will be based on weight of duct and hanger spacing
- Duct larger than 36" should be hung in 'cradle' fashion, with the hanger secured at two points to the roof / ceiling and the cable supporting the duct underneath



# Pipe Support Spacing Data

Recommended minimum support spacing for pipe brackets and equivalent load per clamp when brackets are spaced as recommended:

Copper tube	Tube size (NPS)	Actual outside diameter		Tube weight per foot	Water weight per foot	Total weight per foot Tube & Water	Tube support spacing for horizontal runs (ref. MSS SP-58)	Weight per clamp at recommended support spacing
ASTM B88 (Type K)	inches	inches		lb/ft	lb/ft	lb/ft	ft	lb
	1/2	5/8	0.625	0.344	0.095	0.44	5.0	2.2
	5/8	3/4	0.750	0.418	0.145	0.56	5.0	2.8
	3/4	7/8	0.875	0.641	0.189	0.83	5.0	4.1
	1	1 1/8	1.125	0.837	0.337	1.17	6.0	7.0
	1 1/4	1 3/8	1.375	1.040	0.528	1.57	7.0	11.0
	1 1/2	1 5/8	1.625	1.360	0.746	2.11	8.0	16.9
	2	2 1/8	2.125	2.060	1.306	3.37	8.0	26.9
	2 1/2	2 5/8	2.625	2.920	2.018	4.94	9.0	44.4
	3	3 1/8	3.125	4.000	2.876	6.88	10.0	68.8
	3 1/2	3 5/8	3.625	5.120	3.900	9.02	11.0	99.2

Steel Pipe	Tube size (NPS)	Actual outside diameter		Tube weight per foot	Water weight per foot	Total weight per foot Tube & Water	Tube support spacing for horizontal runs (ref. MSS SP-58)	Weight per clamp at recommended support spacing
ANSI Schedule 40	inches	inches		lb/ft	lb/ft	lb/ft	ft	lb
	1/2		0.84	0.85	0.131	0.98	7.0	6.9
	3/4		1.05	1.13	0.234	1.36	7.0	9.6
	1		1.32	1.68	0.382	2.06	7.0	14.4
	1 1/4		1.66	2.27	0.648	2.92	7.0	20.4
	1 1/2		1.9	2.72	0.871	3.59	9.0	32.3
	2		2.38	3.65	1.472	5.12	10.0	51.2
	2 1/2		2.88	5.79	2.093	7.88	11.0	86.7
	3		3.5	7.58	3.187	10.77	9.0 (12)	96.9
	4		4.50	10.79	5.510	16.30	9.0 (14)	146.7
	6		6.63	18.97	12.510	31.48	9.0 (17)	283.3

# Usage Recommendations

Failure to comply with these recommendations may result in product malfunction and possible damage to property or person and will invalidate the Gripple guarantee. Gripple products are guaranteed to be free from defects in materials and workmanship in accordance with our terms and conditions. No other warranty, whether express or implied, including any warranty of merchantability or fitness for purpose shall exist in connection with the sale or use of any Gripple product.

Full technical information and installation instructions should be obtained directly from Gripple Inc., or via the website [www.gripple.com](http://www.gripple.com).

Please adhere to the following usage recommendations:



## Loads

Always operate the product within its stated Safe Working Load range.



## Cable

Always use the Gripple fastener supplied with Gripple cable. Never use on coated cable or other cable. Trim any damaged filaments with the cable cutter before use.



## Lifting

Do not use for lifting, either by crane or as part of a pulley system. Suspend static loads only.



## Environment

Do not use in chlorinated or chemically corrosive atmospheres. Standard hangers are for use in dry and air conditioned environments only. Stainless steel hangers should be considered for high to saturated humid environments after validation by a competent person. Not suitable for swimming pool environments.



## Installation

Do not walk or stand on the Gripple product installation unless expressly designed for this purpose.



## Painting

Do not paint the cable or fastener prior to installation. Ensure that the hanger is in its final position prior to applying any paint to the cable assembly. Do not move the fastener after painting.



## Impact

If there is potential for impact on the cable suspension or suspended services, seek advice from Gripple Technical Services prior to installation.



## Lubrication

Do not apply oil or any other lubricant to the cable fastener, or any other part of the assembly.



## Hanging at an Angle to Vertical

Ensure that the load calculation considers the effect of 'side load'. For example, at an angle of 60° to vertical, the SWL is effectively reduced by 50%.



## Joining

Never join two ends together in-line.



Ducting: When installing included angle teardrop hangers on round/spiral ducting or pipes, the final included angle of the assembly should not exceed 60°.

Y-Fit: Legs on Y-Fit not to be installed greater than 60°.

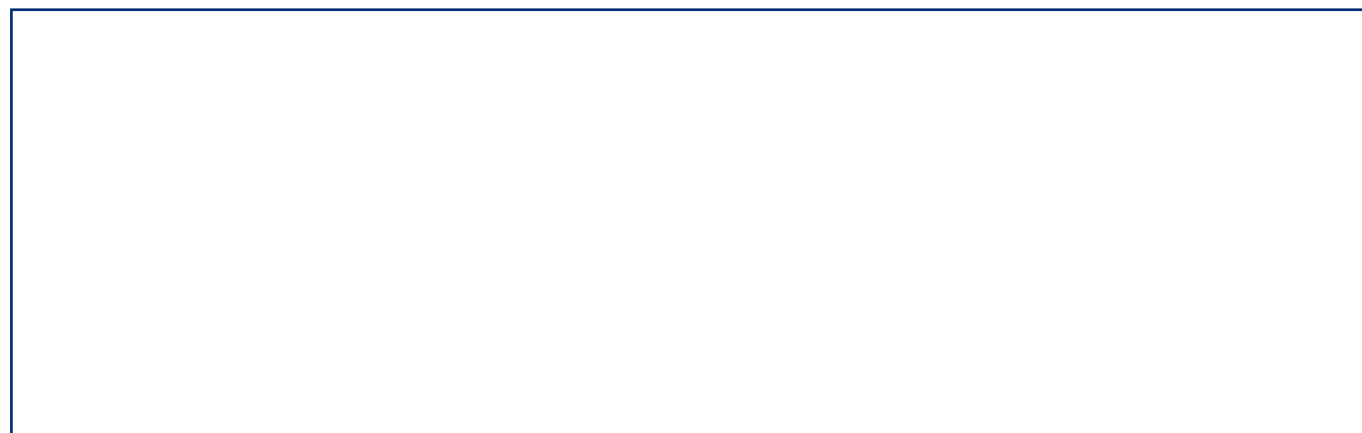
## Quality & Approvals

Gripple UK is ISO 9001:2008 and ISO 14001 certified. Gripple products meet the highest standards of quality, with the lowest environmental impact. Gripple products hold the following approvals, certifications, and verifications:



Gripple's policy is one of continuous development and innovation. We therefore reserve the right to alter specifications, etc. without notice.

**www.gripple.com**  
grippleinc@gripple.com



**Gripple Inc**

1611 Emily Lane  
Aurora  
IL 60502  
USA

**T** | +1 866 474 7753  
**F** | +1 800 654 0689  
**E** | [grippleinc@gripple.com](mailto:grippleinc@gripple.com)

**Gripple Ltd (Headquarters)**

The Old West Gun Works  
Savile Street East  
Sheffield S4 7UQ  
UK

**T** | +44 (0) 800 018 4264  
**F** | +44 (0) 114 275 1155  
**E** | [info@gripple.com](mailto:info@gripple.com)

**Gripple Europe SARL**

1, rue du commerce  
BP 37  
67211 Obernai Cedex  
France

**T** | +33 (0)3 88 95 44 95  
**F** | +33 (0)3 88 95 08 78  
**E** | [frinfo@gripple.com](mailto:frinfo@gripple.com)

**Gripple India**

B 95/2  
Naraina Industrial Area  
Phase I  
New Delhi-110028

**T** | +91 11-40582703  
**F** | +91 11-40582703  
**E** | [ininfo@gripple.com](mailto:ininfo@gripple.com)

WE ARE SOCIAL  
FOLLOW OUR UPDATES

