

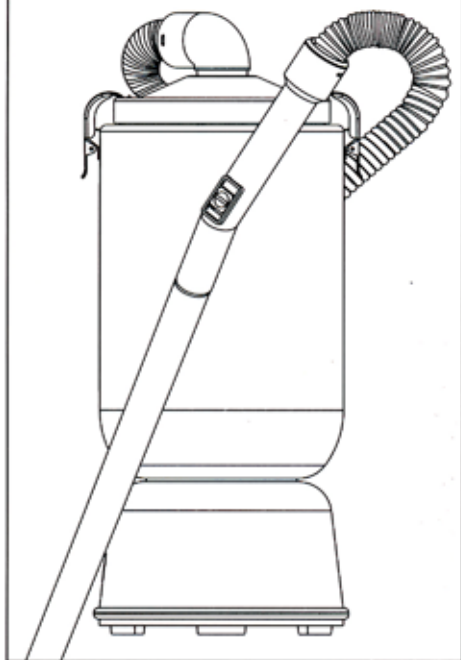
OWNER'S MANUAL

BACK-PACK COMMERCIAL AND HOUSEHOLD DRY PICK UP VACUUM CLEANER
SUPER 120-1200

READ THE OWNER'S MANUAL CAREFULLY BEFORE USING SUPER 120-1200

LISEZ CE MODE D'EMPLOI AVANT D'UTILISER CETTE MACHINE, S'IL VOUS PLAT

BACK PACK VACUUM CLEANER



A007362

IMPORTANT SAFETY INSTRUCTIONS

When using an electrical appliance, basic precautions should always be followed, including the following:

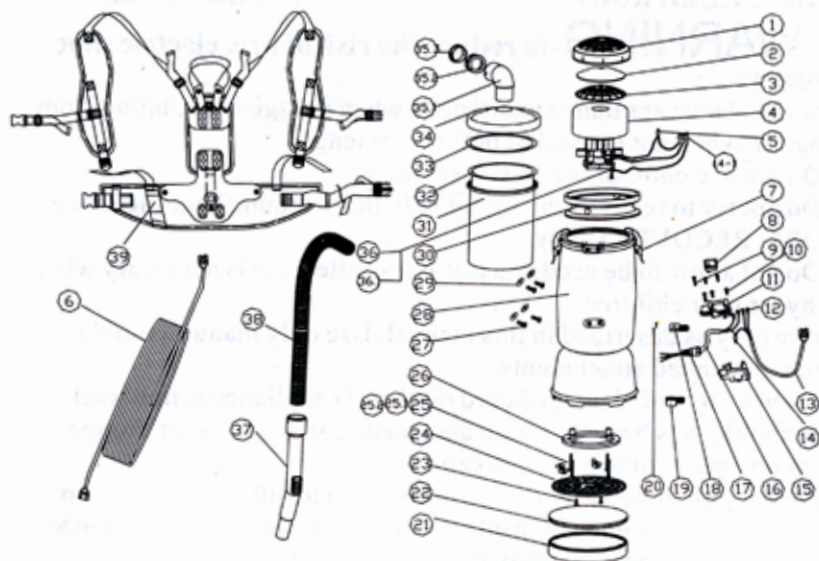
READ ALL INSTRUCTIONS BEFORE USING (THIS APPLIANCE).

⚠ WARNING-to reduce the risk of fire, electric shock, or injury:

1. Do not leave appliance unattended when plugged in. Unplug from outlet when not in use and before servicing.
2. Do not use outdoors or on wet surfaces.
3. Do not try to recover any liquid with this vacuum. This vacuum is for DRY RECOVERY only.
4. Do not allow to be used as a toy. Close attention is necessary when used by or near children.
5. Use only as described in this manual. Use only manufacturer's recommended attachments.
6. Do not use with damaged cord or plug. If appliance is not working as it should, has been dropped, damaged, left outdoors, or dropped into water, return it to a service center.
7. Do not pull or carry by cord, use cord as a handle, close a door on cord, or pull cord around sharp edges or corners. Do not run appliance over cord. Keep cord away from heated surfaces.
8. Do not unplug by pulling on cord. To unplug, grasp the plug, not the cord.
9. Do not handle plug or appliance with wet hands.
10. Do not put any object into openings. Do not use with any opening blocked; Keep free of dust, lint, hair, or any thing that may reduce air flow.
11. Keep hair, loose clothing, fingers, and all parts of body away from openings and moving parts.
12. Turn off all controls before unplugging.
13. Use extra care when cleaning on stairs.
14. Do not use to pick up flammable or combustible liquids, such as gasoline, or use in areas where they may be present.
15. Connect to a properly grounded outlet only. See grounding instructions.
16. Do not pick up any objects that are burning or smoking, such as cigarettes, matches, or hot ashes.
17. Do not use without a dust bag and/or filters in place.
18. Do not operate with wet hands.

SAVE THESE INSTRUCTIONS

EXPLOSIVE



1. Filter guard A 2. Filter 3. Filter guard B 4. Motor
5. Thermo-protector 6. Extension cord (not included-optional)
7. Cover latch 8. switch 9. Screws(M3*25) 10. Screws(M3*12)
11. Upper part of switch box 12. Connector terminal and insulator
13. Power supply cords and cord sets
14. Wire connector and soldering log 15. Lower part of switch box
16. Connectiong cord 17. Connection cable fixer nut
18. Connection cable fixer part 1 19. Connection cable fixer part 2
20. Screws(M3*12) 21. Round rubber support
22. Sound muffler (Foam filter) 23 Screws(M3*10)
24. Plastic guard 25. Screw(M5*40) and washer
26. Motor clamping ring 27. Screw(M8*15) 28. Canister
29. Washer 30. Upper rubber depression ring 31. Cloth dust bag
32. Paper dust bag 33. Cover seal ring
34. Cover 35.1 Bent connect tube 35.2 Screw for hose
- 35.3 Screw cuff 36. Wire connector 37. Handle 38. Hose
39. Carrier package

INSTALLATION AND OPERATING INSTRUCTION

INSPECTION

Carefully unpack and inspect your new vacuum for shipping damage. Each unit is tested and thoroughly inspected before shipping.

⚠ WARNING

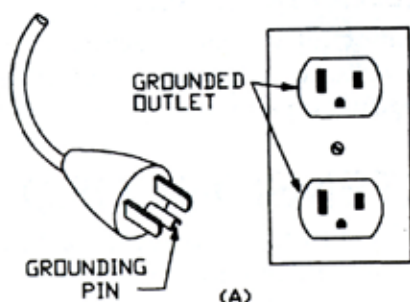
DO NOT vacuum with a frayed, worn, or damaged cord.
DO NOT vacuum liquids or expose the backpack vacuum to rain or water.
DO NOT vacuum hazardous or toxic materials.
DO NOT use to pick up flammable or hazardous material

GROUNDING INSTRUCTIONS

This appliance must be grounded. If it should malfunction or breakdown, grounding provide a path of least resistance for electric current to reduce the risk of electric shock. This appliance is equipped with a cord having an equipment-grounding conductor and grounding plug. The plug must be inserted into an appropriate outlet that is properly installed and grounded in accordance with all local codes and ordinances.

⚠ WARNING -improper connection of the equipment-grounding conductor can result in a risk of electric shock. Check with a qualified electrician or service person if you are in doubt as to whether the outlet is properly grounded. Do not modify the plug provided with the appliance. If it will not fit the outlet, have a proper outlet installed by a qualified electrician.

This appliance is for use on a nominal 120-volt circuit and has a grounding attachment plug that looks like the plug illustrated in sketch A. Make sure that the appliance is connected to an outlet having the same configuration as the plug. No adaptor should be used with this appliance.



MOTOR

AMETEK119534-00 vacuum motors must never be used in application in which wet or moist conditions are involved, where dry chemicals or other volatile materials are present, or where airflow may be restricted or blocked. Such motors are designed to permit the vacuumed air to pass over the electrical wiring to cool it. Therefore, any liquid (including water), dry chemical, or other foreign substance which could come in contact with electrical conductors could cause combustion (depending on volatility) or electrical shock. Failure to observe these precautions could result in property damage and severe personal injury, including death in extreme cases.

THERMO-PROTECTOR INSTRUCTIONS

This appliance is equipped with a thermo-protector, which will cut off the circuit automatically to prevent the motor from overheating. Sufficiently plugging the airway for an extended period will result in the vacuum shutting off. If this occurs, press the switch to turn the vacuum to its OFF position and wait about 5 minutes for the motor to cool to a safe operating temperature. Be sure to determine the cause of overheating and rectify the problem before using the vacuum cleaner again, or it will continue to overheat and shut off. In some instance the circuit is cut off because of high motor temperature caused by dust bag clog or airway block. Please unplug the vacuum and check the inner paper dust bag and airway. If the dust bag is too dirty and clogged, replace with a new one. If airway is blocked, please get rid of the blockage before reuse. The motor can be restart when it is cool.

ELECTRICAL

Excluding 220V motors, vacuum motors operate on a standard 120 volt, 60Hz, AC circuit. Severe changes in voltage, high or low, can cause damage to the motor and cause premature motor failure.

EXTENSION CORD

To prevent electrical damage, use the recommended 16 foot/16 gauge extension cord provided. If you need to use a 100 foot cord, it must be 14 gauge or better. Do not use cords longer than 100 feet.

PREPARATION FOR OPERATION

1. Remove the cover (No. 34) and cover seal ring (No. 33) , pull out the cloth dust bag (No. 31). Check to see that the filter guards (No. 1, No. 2 and No.3) have not shifted during shipping. (Figure A)
2. Install an inner paper dust bag (No. 32) inside of the outer cloth dust bag (No. 31). At the beginning of each shift, the bags should be checked. Empty or replace as necessary.

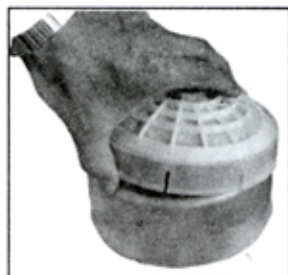


Figure A

NOTE: Never use a paper dust bag without the cloth dust bag.

3. Place the cover seal ring (No. 33) on the dust bags' opening (No.32). (Figure B)
4. Replace the cover (No. 34) and clip the sunken edge of the cover tight by pushing downward the cover clip (No.7).
5. Push the bent connector tube (No. 35) into the cover (No.34) , make sure that it inserts into the cover (No. 34) completely and tightly (Figure C).

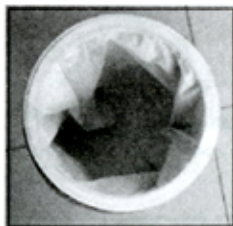


Figure B

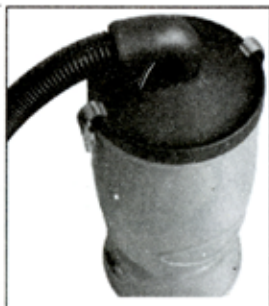


Figure C



Figure D

6. Check the hose ends to make sure that they are tightly fixed.
7. Check the wear on the cord by the vacuum body and at the plug. Pass the power supply cord (No.13) through the strip outside the left side of the waist belt.(Figure E).

-
8. Fix the switch box (No.11 and No.15) under the sewn strap and knot the other strap around the switch box. (Figure F & Figure G).

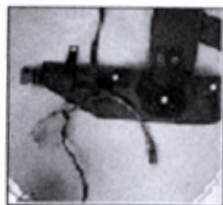


Figure E

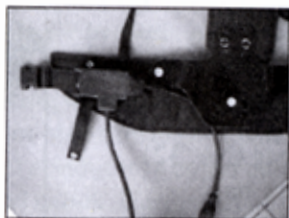


Figure F



Figure G

9. Loosen the waist belt latch and chest belt latch. In an open area, lift the vacuum by one shoulder strap and slide your free arm into the other strap. (Figure D)
10. Adjust the shoulder straps to allow the waist belt to be buckled around your waist.
11. Fasten the waist belt and chest belt snugly and make sure the weight is resting comfortably on your hips. NOTE: The back-plate is adjustable up or down by removing the four screws (No.27) that attach to the vacuum's body. (Figure H)
12. Attach tools to the handle and make sure the two ends are tightly Connected. (Figure I)



Figure H



Figure I




PROPER VACUUMING MOTION FOR LARGE AREA WITH DIRECT SUCTION TOOLS

1. Begin with the wand parallel to your body.
2. Draw the top of the wand in towards your waist and twist at the waist walking back and forward (a side-to-side motion).

-
3. The motion is similar to mopping and keeps the upper body and arms from tiring.

MAINTENANCE INSTRUCTION

 **WARNING:** The following information is for use by qualified service personnel only and is to provide guidance for troubleshooting and maintenance.

- ◆ UNPLUG the vacuum when working on the motor or any electrical part.
- ◆ CHECK the condition of all electrical cords before each use.
- ◆ DO NOT lubricate the motor; it is equipped with sealed bearings.
- ◆ The appliance has NO user serviceable parts.

PROPER STORAGE

When the vacuum is not in use, it should be stored in a dry place

ELECTRICAL CORD CARE

NEVER stretch the cord tightly between the vacuum and the outlet. A cord That is stretched or pulled will not function properly and creates a danger. After vacuuming, unplug the cord and wind it up loosely . DO NOT wind the cord up by wrapping it around your hand and elbow.

CARING FOR YOUR VACUUM

1. Every time you finish vacuuming, shake out the cloth and Paper dust bags (No.31 and No.32).
2. Each week, rinse, dry and return the foam (NO.22) at the bottom of the appliance below the motor.
3. After each shift, wipe the inside and outside of the vacuum with a household cleaning agent.

FILTER MAINTENANCE

1. Check the paper dust bag (No.32) each time you start and finish vacuuming. A clogged and dirty dust bag restricts airflow and results in reduced suction and overheating.



Figure J

2. While vacuuming throughout a building, stop every two hours or as needed to shake out the paper dust bag (No.32). Replace the paper dust bag when necessary. (Figure J)

NOTE: Lift both paper dust bag and cloth bag out at the same time to avoid ripping the paper dust bag, especially if it is full.

3. Once a month (or more often if necessary) hand or machine wash the cloth dust bag (No.31) and let it **LINE DRY**. (Do not put it in the dryer).
4. Once a month (or more often if necessary) clean the filter (No.2) between the motor guards, located inside the vacuum under the paper and cloth dust bag. (Figure K)
 - a. Pull the top piece of the motor guard (No.1) off and remove the foam media (No.2). Shake it out, rinse it and let it air dry thoroughly.
 - b. Before the next use, return the foam media (No.2) to its place. Replace with new foam media if necessary.
 - c. Firmly snap the top piece of the motor guard (No.1) into place.
5. Each week rinse, air dry, and return the foam filter (No.22) at the bottom of the appliance below the motor
 - a. Pull out the round rubber support (No.21) and take foam filter (No.22) out, rinse it and let it air dry thoroughly.
 - b. Before the next use, return the foam filter (No.22) to its place.
 - c. Put the round rubber support (No.21) into the canister to support the foam filter from falling down.



Figure K