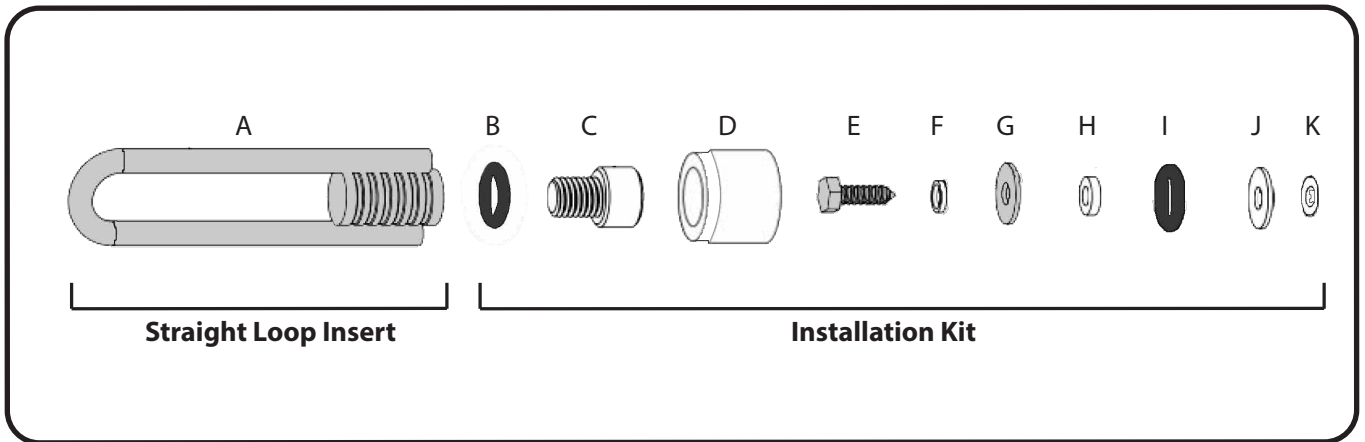
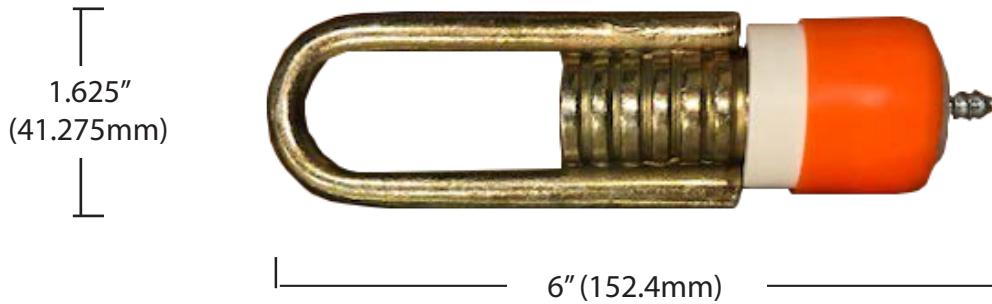


DESCRIPTION

10K (44kN Anchor) Straight Loop Insert

The Straight Loop Insert is a pre-installed receptical that is cast-in place during construction of the surface for the purpose of attaching an ANSI/OSHA certified anchorage connector once the concrete is fully cured.



SPECIFICATIONS

▲ **UTS**
10,000-lbf / 44kN

▲ **Max User Weight**
310-lbs / 140kg

▲ **Working Load**
2,000-lbs / 907kg

MATERIALS

▲ **Straight Loop Insert**
Zinc Plated Steel

▲ **Screw**
Plastic

▲ **Hardware Assembly**
Zinc Plated Steel, Plastic, Rubber

▲ **O-Ring**
Rubber

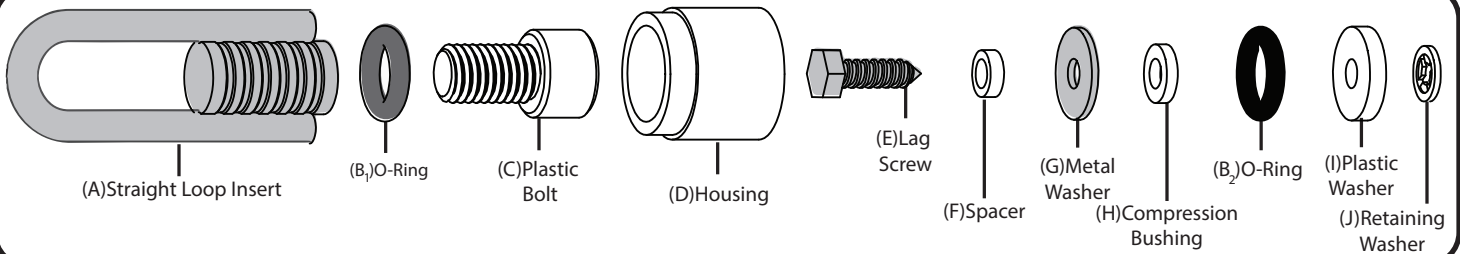
▲ **Housing**
Plastic

PRODUCT CONFIGURATIONS

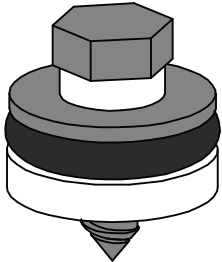
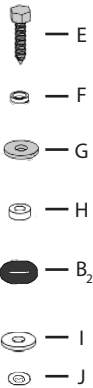
MODEL	APPLICATION	COLOR	WEIGHT
SW-EX100	Straight Loop Insert	Bronze and Orange	305g

US Patent Pending

STRAIGHT LOOP INSERT INSTALLATION GUIDELINES

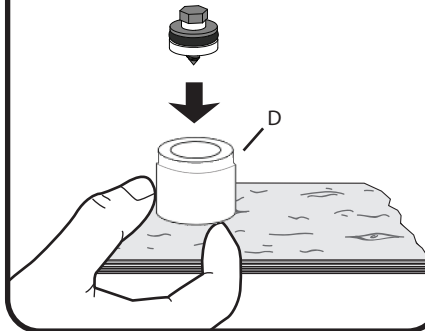


1



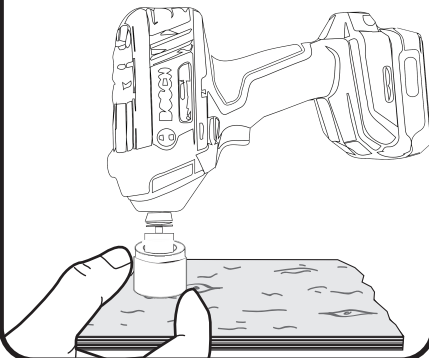
Assemble mounting hardware over the threaded axis as shown. All other components should sit flush with each other and be held in place by Part J.

2



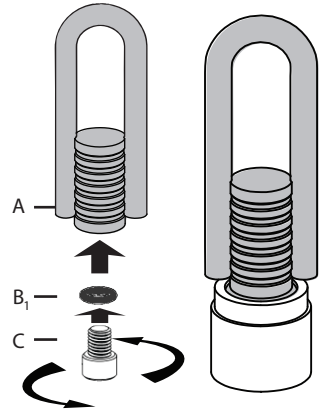
Choose installation location. Surface should be flat and free of debris. Place housing orange side down and hold firmly. Insert mounting hardware into housing and push until secure.

3



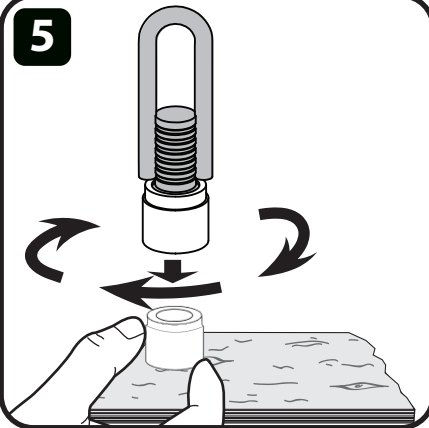
Firmly hold housing flush to surface while fully tightening mounting hardware with drill. Do not over tighten to prevent stripping out decking.

4



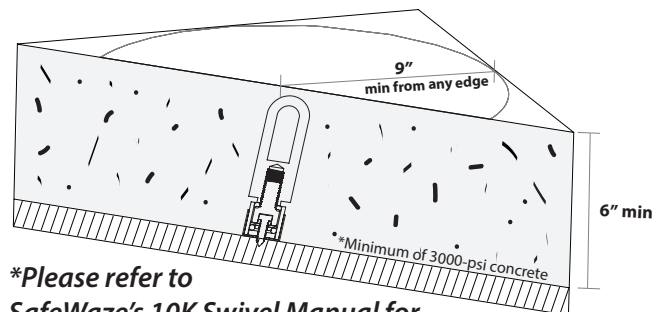
Assemble anchorage assembly as shown. Assembly should be tightened until Part B just contacts Part A and Part C but is not compressed.

5



Insert bolt end of anchorage assembly from step 2 into Part D. Ensure hex socket on Part C mates with bolt head of Part E. Hand tighten by rotating Part A and applying pressure towards decking. Do not over tighten to prevent stripping out decking.

Section View:



**Please refer to SafeWaze's 10K Swivel Manual for instructions regarding fastening Swivel to Straight Loop Insert.*

***Note: Avoid kicking or knocking over installed Straight Loop Inserts while working. It is recommended that inserts are fastened to rebar by wire tie or equivalent method for additional support.**